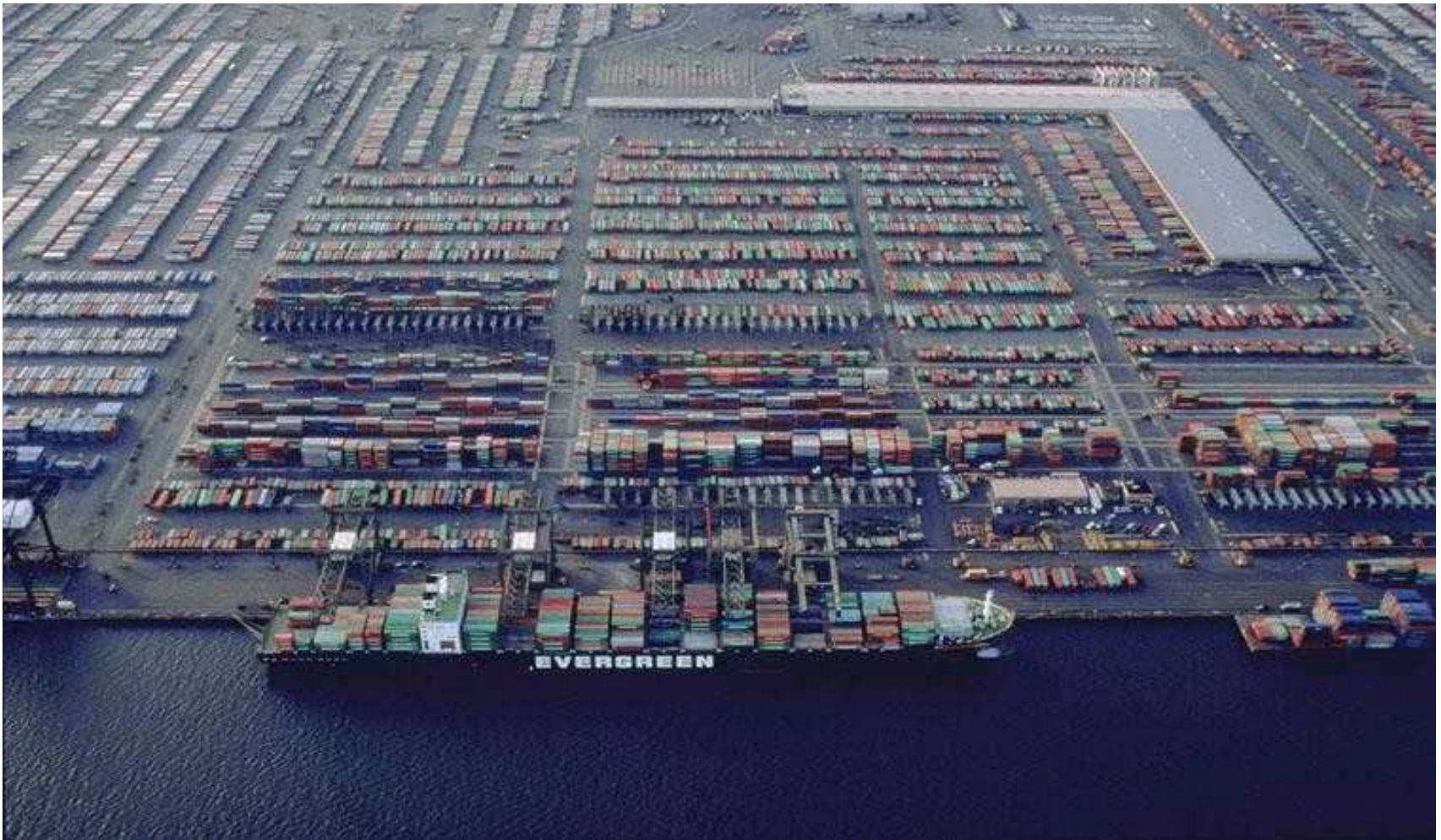


# 1917 - Subpart B - Marine Terminal Operations

---



# 1917 - Subpart B

---

- 1917.11 – Housekeeping
- 1917.12 - Slippery conditions
- 1917.13 – Slinging
- 1917.14 - Stacking of cargo pallets
- 1917.15 – Coopering
- 1917.16 - Line handling
- 1917.17 - Railroad facilities
- 1917.18 - Log handling



# 1917 - Subpart B

---

- 1917.19 - Movement of barges and railcars
- 1917.20 - Interference with communications
- 1917.21 - Open fires
- 1917.22 - Hazardous cargo
- 1917.23 - Hazardous atmospheres & substances
- 1917.24 - Carbon monoxide

# 1917 - Subpart B

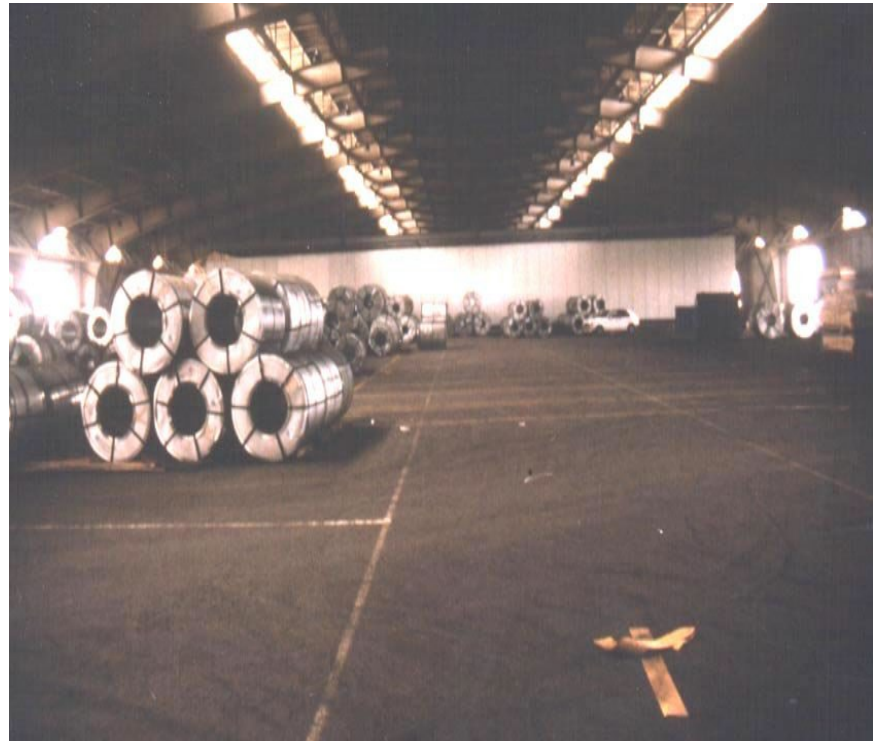
---

- 1917.25 - Fumigants, pesticides, insecticides and hazardous preservations
  - 1917.26 - First aid and lifesaving facilities
  - 1917.27 – Personnel
  - 1917.28 - Hazard communication
  - 1917.29 - Retention of DOT markings, placards and labels
  - 1917.30 - Emergency action plans
-

# Housekeeping

1917.11(a)

- Work areas - kept clear of equipment, materials, and debris.









# Housekeeping

---

1917.11(b)

- Hatch beams, covers, and pontoons placed in working areas
  - Stowed in stable piles
  - Secured against tipping **or** falling
  - If more than one high – dunnage under and between tiers





# Housekeeping

1917.11(c)

- Cargo and materials shall not obstruct access to buildings



# Housekeeping

1917.11(d)

- Protruding nails removed or flattened from dunnage, lumber, and shoring material





# Slippery Conditions

1917.12

- Conditions causing slippery working and walking surfaces
  - Eliminated, to the extent possible

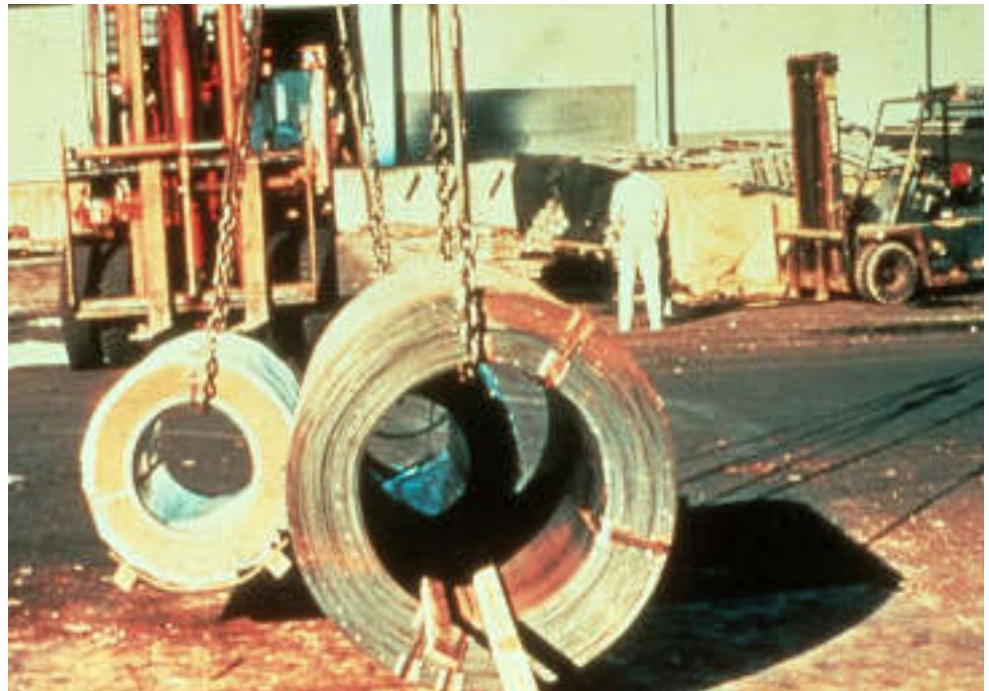


# Slinging

---

1917.13(a)

- Drafts safely slung before being hoisted
- Dunnage must be removed





# Slinging

---

1971.13(a)

- This draft is unstable and unsafe



# Slinging

1917.13(b)

- Hoisted baled cargo with straps
  - Strong enough to support load
  - Two cargo hooks in separate straps



# Slinging

1917.13(c)

- Unitized loads hoisted by bands and straps only:
  - Strapping suitable for hoisting
  - Strong enough to support weight



# Slinging

1917.13(d)

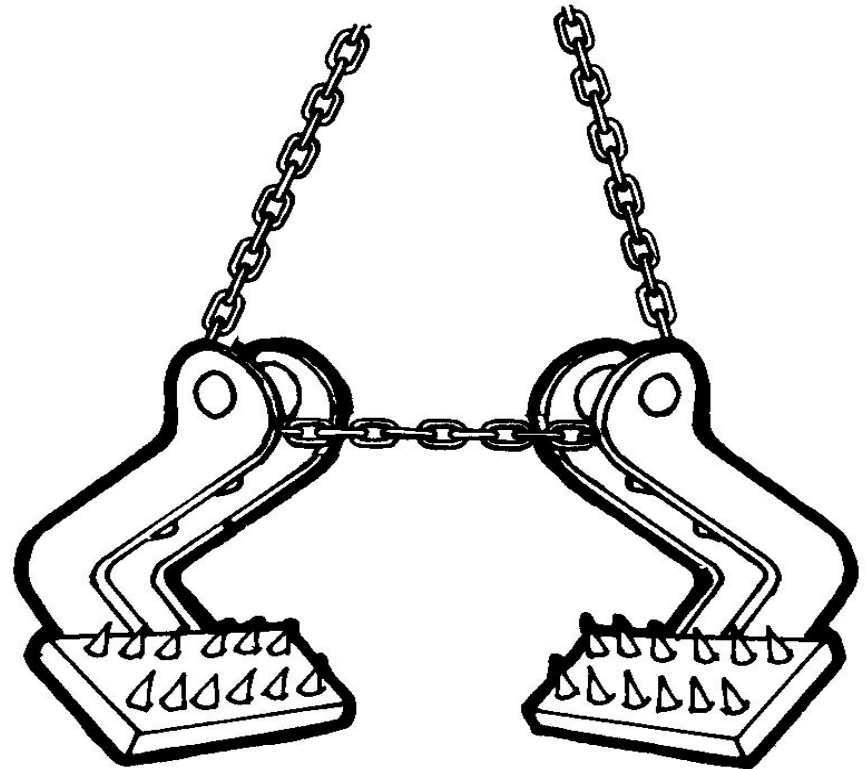
- Cargo having damaged or missing banding
  - Employ additional cargo handling gear



# Slinging

1917.13(e)

- Case hooks only used with cases designed for their use





# Slinging

1917.13(f)

- Tag lines used with loads requiring continuous manual guiding



# Slingsing

1917.13(g)

- Intermodal containers to be handled per 1917.71(f)



# Slinging

1917.13(h)

- Employees stay clear of area beneath overhead drafts and descending lifting gear





# Slinging

1917.13(i)

- Employees not allowed to ride hook or load.









3 10'93





# Stacking of Cargo and Pallets

---

1917.14

- Cargo, pallets, materials stored in tiers
  - Stacked to avoid sliding or collapse











# Coopering

1917.15

- Repair and reconditioning of damaged packaging must not endanger employees





# Line Handling

1917.16(a)

- Employees handling lines have safe access
- Cargo operations not obstruct mooring and unmooring



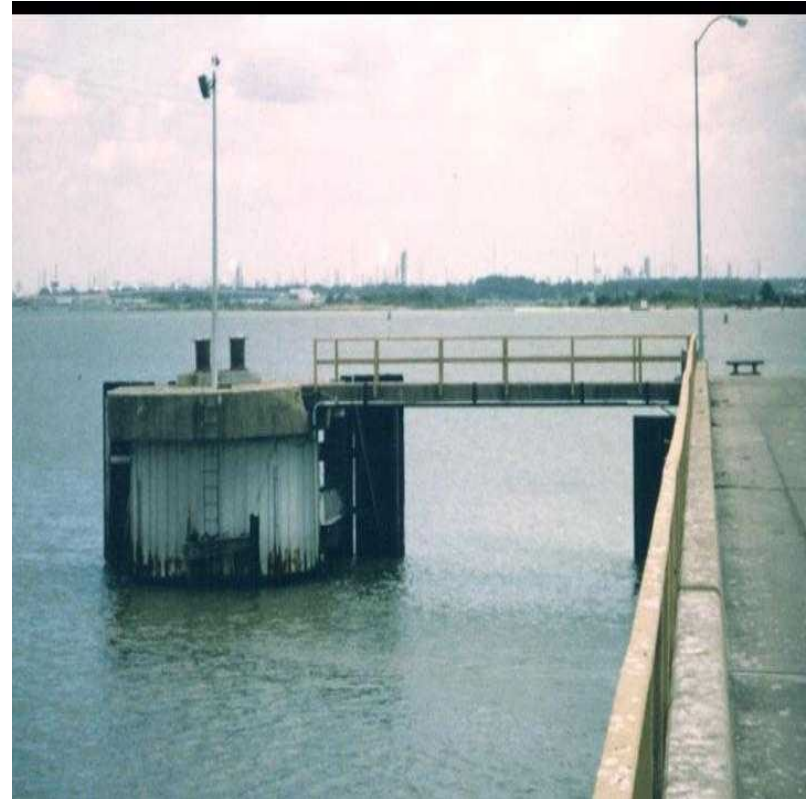




# Line Handling

1917.16(b)

- Where apron width over water is insufficient for safe walkway
  - Grab lines or rails shall be provided



# Railroad Facilities

1917.17(a)

- Railcar floors must be visibly safe
  - For intended work activity, *and*
  - Equipment used





# Railroad Facilities

1917.17(b)

- Alternate route established allowing employees to pass through railcar work areas
  - Where  $>10'$  exists between railcars



# Railroad Facilities

1917.17(c)

- Employees not permitted to remain in railcars after work completed





# Railroad Facilities

1917.17(d)(1)-(2)

- Railcars chocked or prevented from moving:
  - When dockboards are in place
  - While employees are working
    - » Within, on or under the railcars
    - » Near tracks at end of cars



# Railroad Facilities

1917.17(d)(1)-(d)(2)

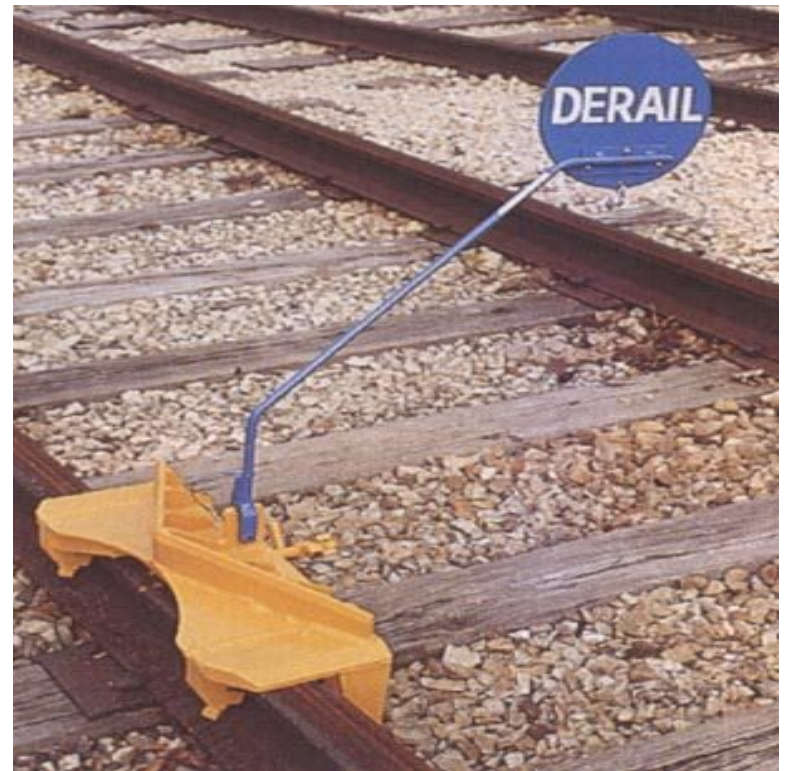
- Acceptable way to prevent movement is to set hand brake



# Railroad Facilities

1917.17(e)

- Employees working in or around railcars
  - Protected from impact of moving cars



# Railroad Facilities

1917.17(f)

- Before cars are moved:
  - Unsecured and overhanging stakes, wire straps, and banding
    - » Removed or placed so not to create hazards



# Railroad Facilities

1917.17(g)

- Necessary controls taken during railcar movement
  - To safeguard personnel









# Railroad Facilities

---

1917.17(h)

- Door opened slightly
- Check for shifting loads before being opened fully



# Railroad Facilities

1917.17(i)

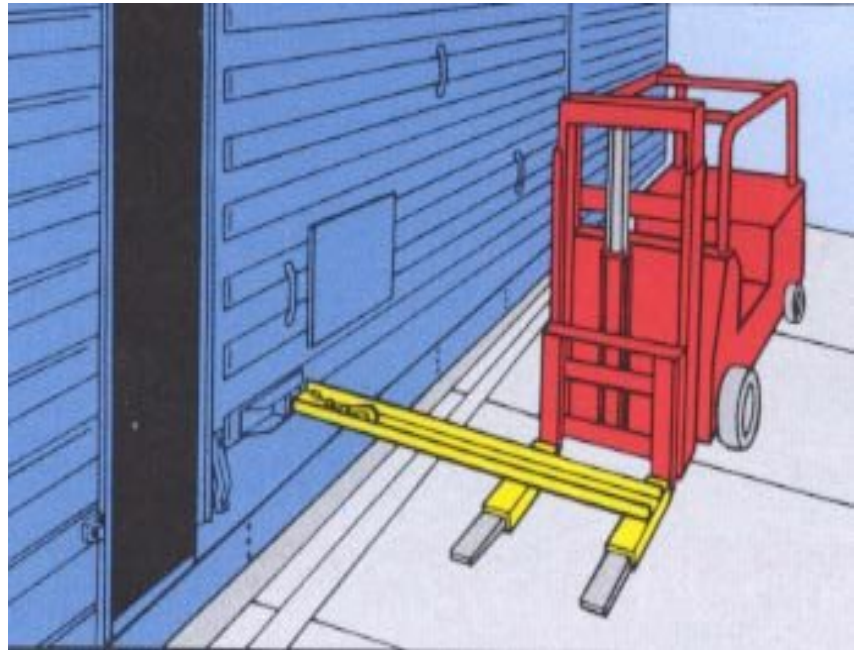
- When forklifts used to open doors
  - Equipped with attachments for that purpose



# Railroad Facilities

1917.17(j)

- Railcar door openers or powered trucks equipped with door opening attachments
  - Used to open jammed doors





SECURE

HASP BEFORE  
MOVING CAR

PULL DOOR TIGHT  
BEFORE LOCKING



FORK TRUCK PUSH POCKET



STANDARD CAR SEAL ONLY

DOOR LATCH  
97-402

4130



# Railroad Facilities

1917.17(j)

- This is not a safe way to open a jammed door.



# Railroad Facilities

1917.17(k)

- Employees not work on or in cars
  - Where danger of being struck by cargo exists

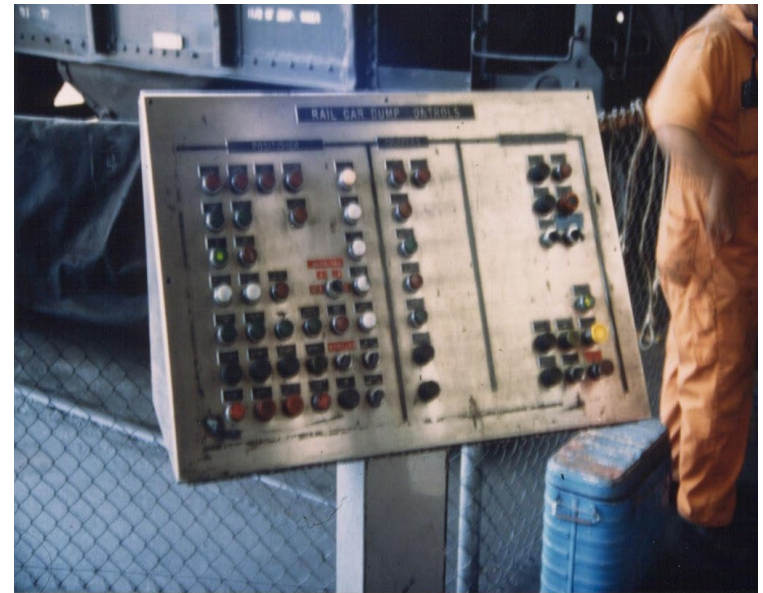




# Railroad Facilities

1917.17(I)

- Operators of railcar dumps have unrestricted view of operations
- Emergency means of stopping movement





# Railroad Facilities

1917.17(m)

- Recessed switches enclosed to provided level surface





# Railroad Facilities

1917.17(n)

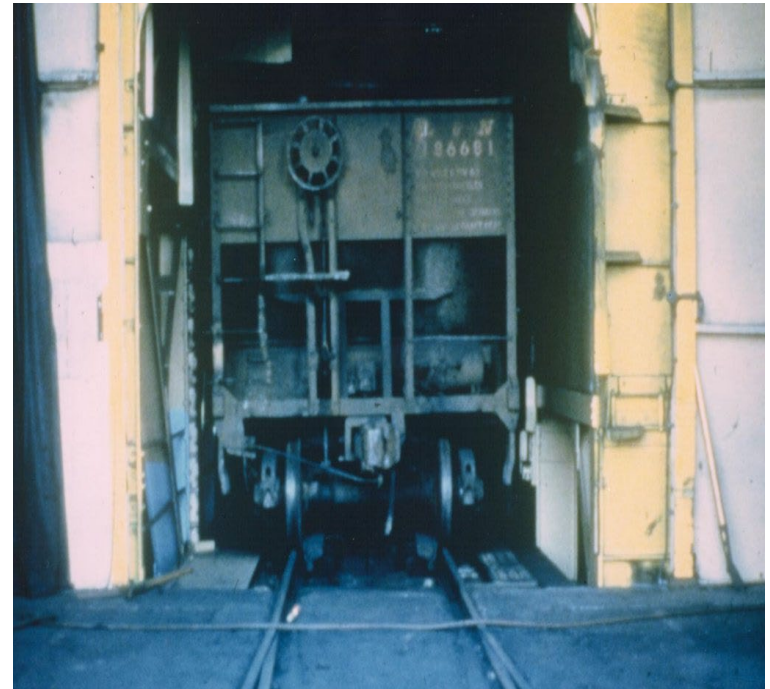
- Warning signs posted where vision restricted
  - Where doorways open onto tracks
  - At blind corners



# Railroad Facilities

1917.17(o)

- Warning signs posted
  - Insufficient clearance for personnel exists between railcars and structures



# Log Handling

---

1917.18(a)

- Bunks used to contain logs
  - Rounded corners and rounded structural parts to prevent sling damage





# Log Handling

---

1917.18(b)

- Logs kept secured while being moved within terminal
- During unloading logs
  - Prevented from moving while binders being removed



# Log Handling

1917.18(c)

- Hoist logs by at least two slings, **or**
- Other gear designed for safe hoisting



# Log Handling

1917.18(d)

- Logs stowed on terminal
  - Not more than one tier high unless placed in bunks, **or**
  - Secured against movement



# Log Handling

1917.18(e)

- Before logs slung for hoisting:
  - Supported to prevent spreading
  - Allow passage of slings beneath load
- When placed in bunks or retaining devices:
  - No log higher than stanchions or retaining members of device





# Movement of Railcars and Barges

1917.19

- Barges and railcars not moved by:
  - Running rigging of vessel cargo booms
  - Shore cranes, *or*
  - Equipment not suitable for purpose

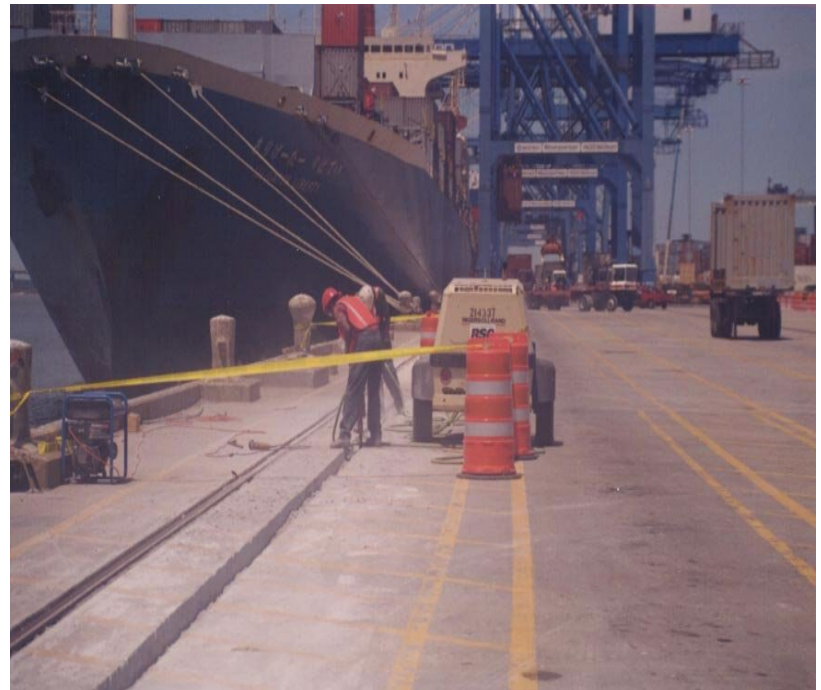




# Interference with Communications

1917.20

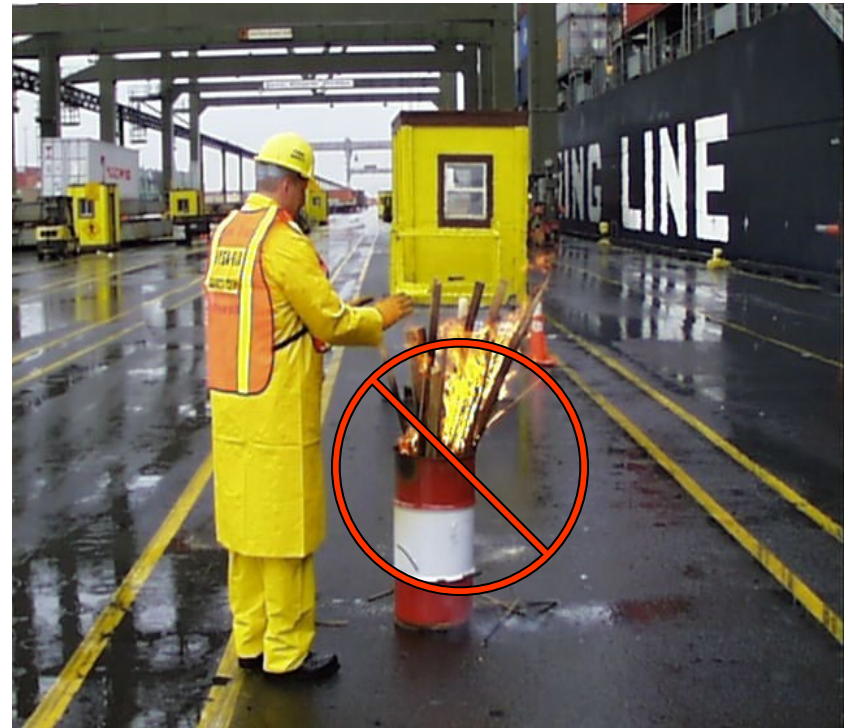
- No cargo handling operations when:
  - Noise-producing,
  - Maintenance,
  - Construction or repair work interferes with communications



# Open Fires

1917.21

- Open fires and fires in drums or containers prohibited





# Hazardous Cargo

---

1917.22(a)

- Ascertain any hazardous cargo
- Inform employees nature of hazards





# Hazardous Cargo

---

1917.22(b)

- Hazardous cargo properly slung





# Hazardous Cargo

1917.22(c)

- Hazardous cargo leaking
  - Employees removed from affected area



# Hazardous Atmosphere and Substances

1917.23(b)(1)-(b)(2)

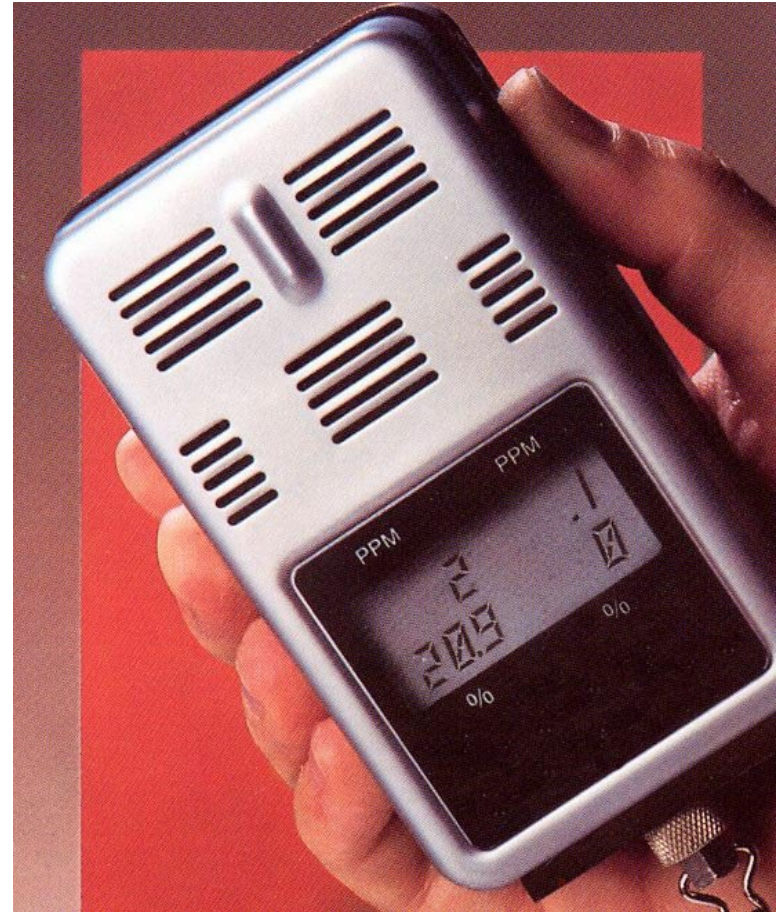
- Hazardous atmosphere
  - Designated person test atmosphere
- Tests maintained for at least 30 days



# Carbon Monoxide

1917.24(a)

- Exposure limits – 50 ppm – 8 hour average area level
- Employees removed from enclosed space if ceiling over 100 ppm





# Carbon Monoxide

1917.24(b)

- Testing required whenever necessary
  - Assure exposure level below average area level



# Carbon Monoxide

1917.24(c)-(d)

- Testing by designated person
  - Using NIOSH certified instruments
- Test records maintained for 30 days
  - Date, time, location and results






# Fumigants, Pesticides, Insecticides and Hazardous Preservatives

1917.25(a)

- Concentration is hazardous
  - Employees removed until test show it is safe

 **Great Lakes** MATERIAL SAFETY DATA SHEET  
Chemical Corporation

MSDS Number: 00055 Effective Date: 3/26/98  
Product Name: Meth-O-Gas 100, Meth-O-Gas Q, Methyl Bromide (MUP) Page: 1 of 11

---

**SECTION I - CHEMICAL PRODUCT AND COMPANY IDENTIFICATION**

Product Name:	Meth-O-Gas 100, Meth-O-Gas Q, Methyl Bromide (MUP)
Manufacturer:	Great Lakes Chemical Corporation
Address:	P.O. Box 2200
City:	West Lafayette
State:	Indiana
Zip:	47996-2200
Emergency Telephone Number:	1-800-949-5167
Information Telephone Number:	1-765-497-6100 Fax: 1-765-497-6123
Chemtrec Phone:	1-800-424-9300
Effective Date:	3/26/98
Supersede Date:	9/9/97
MSDS Prepared By:	Regulatory Affairs Department/Great Lakes Chemical Corporation
Synonyms:	Meth-O-Gas, Bromomethane
Product Use:	EPA Registered Pesticide
Chemical Name:	Methyl bromide
Chemical Family:	Alkyl bromide

*Additional Information*

No information available

---

**SECTION II - COMPOSITION/INFORMATION ON INGREDIENTS**

INGREDIENT NAME	CAS No.	%	EXPOSURE LIMITS
Dimethyl ether	115106	~0.2	Y (Hazardous) Not established (OSHA PEL TWA) Not established (OSHA PEL STEL) Not established (OSHA PEL CEIL) Not established (ACGIH TLV TWA) Not established (ACGIH TLV STEL) Not established (ACGIH TLV CEIL)
Methyl bromide	74839	>99.5	Y (Hazardous) Not established (OSHA PEL TWA) Not established (OSHA PEL STEL) C20 ppm (Skin) (OSHA PEL CEIL) 1 ppm (Skin) (ACGIH TLV TWA) Not established (ACGIH TLV STEL) Not established (ACGIH TLV CEIL)

# Fumigants, Pesticides, Insecticides and Hazardous Preservatives

1917.25(d)

- Chemical only applied to cargos by designated persons



# Fumigants, Pesticides, Insecticides and Hazardous Preservatives

1917.25(e)(1) –(2)

- Entry into hazardous atmospheres:
  - Designated person
  - PPE per Subpart E
  - Training in nature of hazard, precautions, use of PPE and emergency equipment
  - Warning signs posted at all access points





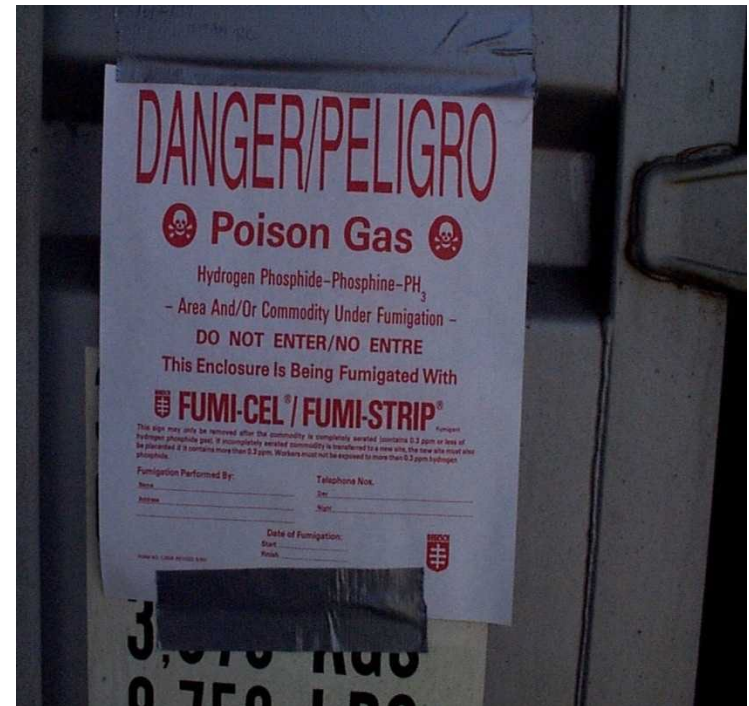
# Space containing a hazardous atmosphere ???



# Fumigants, Pesticides, Insecticides and Hazardous Preservatives

1917.25(f)

- Signs posted wherever hazardous atmospheres are present
  - Identify name of substance
  - Type of danger
  - Employee precautions
  - Emergency treatment





# Fumigants, Pesticides, Insecticides and Hazardous Preservatives

1917.25(f)

- Containerized shipments of fumigated tobacco
  - Aeration period – 48 or 72 hours (depending on type of packaging)
- Employer have written warranty from fumigation facility





# First Aid and Lifesaving Facilities

1917.26(a)

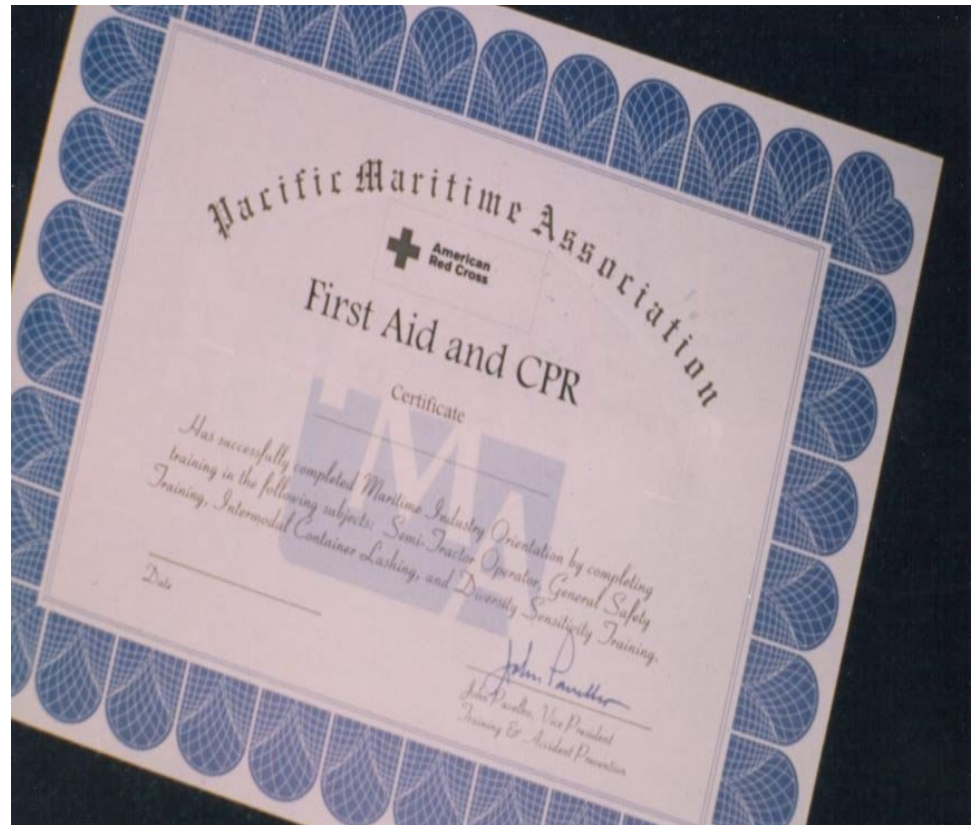
- All injuries must be reported to employer



# First Aid and Lifesaving Facilities

1917.26(b)

- Certified first aid person on terminal during work operations





# First Aid and Lifesaving Facilities

1917.26(c)

- Weatherproof, properly stocked kits available





# First Aid and Lifesaving Facilities

---

1917.26(d)

- Stretchers with lifting bridles, blanket and patient restraints
  - Kept close to each vessel



# First Aid and Lifesaving Facilities

1917.26(e)

- Telephone or other means for reporting medical emergencies
  - Readily available



# First Aid and Lifesaving Facilities

1917.26(f)

- USCG approved 30" life ring with 90 feet of line attached
- A permanent or portable ladder
  - Giving access to water
  - Within 200 feet of work areas





# Personnel

1917.27(a)

- Only trained and/or experienced personnel
  - Operate cranes and mobile equipment

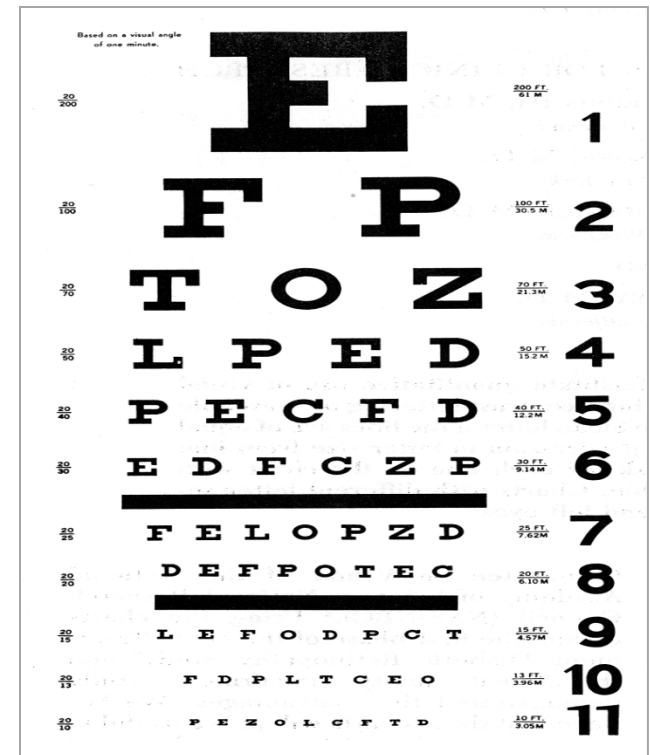




# Personnel

1917.27(a)

- Equipment operators have good eyesight and hearing
- Not subject to known ailments that would suddenly incapacitate them
  - See note to (a)(2).



# Personnel

1917.27(b)

- Supervisors of more than 5 persons
  - Trained in accident prevention



# Hazard Communication

1917.28

- Subpart Z, 1910.1200 applies by reference



# Retention of DOT Markings, Placards and Labels

1917.29

- Hazmat markings kept on packages and containers
  - Until cleaned of residues and purged of vapors



# Emergency Action Plans

1917.30(a)

- Emergency action plan in writing
- Elements:
  - Escape procedures and route assignments
  - Account for employees
  - Rescue and medical duties
  - Preferred method to report emergencies
  - Names and titles of persons to be contacted for further information of duties

XYZ TERMINAL  
OPERATING  
COMPANY

EMERGENCY  
ACTION PLAN

REVISED 4/28/00



# Emergency Action Plans

1917.30(a)(3)

- Employer establish an employee alarm system
  - For warning and evacuation



1917.30(a)(4)

- IN CASE OF EMERGENCY  
EVACUATION SITE PLAN**

NOT TO SCALE

**X YOU ARE HERE**

  - FIRE EXTINGUISHER
  - FIRE ALARM PULL
  - HYDRANT
  - FIRE HOSE CABINET
  - FIRE EXIT
  - FUEL TRUCK AREA
  - FIRE WATCH AREA
  - TELEPHONE PUBLIC
  - FIRE ALARM
  - FIRE WATCH
  - HYDRANT

APL MIDDLE HARBOR TERMINAL BERTHS 60 - 63 OAKLAND, CA 94607

**EMERGENCY  
3-911**

**IN CASE OF  
EMERGENCY  
LOCATED IN THE**

  - MAIN GATE SEC
  - CY (GATE HOUSE)
  - THIRD FLOOR A
  - OUTSIDE TERM
  - OFFICE
  - MAIL / MACHIN
  - CUSTOMER SER

# Emergency Action Plans

1917.30(a)(5)

- Designated persons trained to assist in evacuation procedures
- Employees trained:
  - When plan developed
  - When actions or responsibilities change
  - When plan changes



# Thank You For Attending!

---

## Final Questions?

**1-800-NC-LABOR**

(1-800-625-2267)

[www.nclabor.com](http://www.nclabor.com)

