



Marine Terminals – 29 CFR 1917



Marine Terminals

29 CFR 1917

- Covers 29 CFR Part 1917
- Originally issued in 1983
- Vertical Standard
- Updated as part of revision to Longshoring Standard
- Revisions took effect 1/21/98 with some exceptions

Subpart A

29 CFR 1917

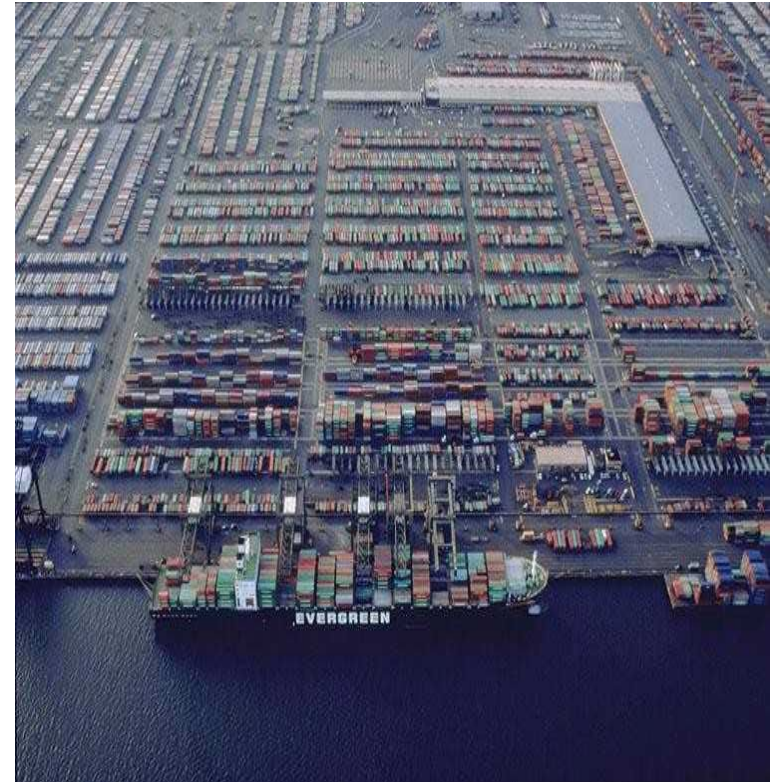
- 1917.1 – Scope and Applicability
- 1917.2 – Definitions
- 1917.3 – Incorporation by Reference
- 1917.4 – OMB Control Numbers Under the Paperwork Reduction Act



Scope and Applicability

1917.1

- Essentially covers everything inside marine terminal
 - Devoted to marine cargo handling
- Activity associated with operation and functions of terminal
 - Use and routine maintenance of facilities and equipment



Scope and Applicability

1917.1

- 1917 stops at foot of gangway or ramp
- 1918 begins at foot of gangway or ramp
- Covers all longshoring operations aboard vessel



Scope and Applicability

1917.1

- Part 1910 standards which are applicable:
 - Abrasive blasting - 1910.94
 - Access to medical records -1910.1020
 - Commercial diving operations - Subpart T
 - Grain handling facilities - 1910.272
 - Hazard communication - 1910.1200
 - Ionizing radiation - 1910.1096



Scope and Applicability

1917.1

- Noise - 1910.95
- Nonionizing radiation - 1910.97
- Respiratory protection - 1910.134
- Safety requirements for scaffolding-1910.28
- Servicing multi-piece and single piece rim wheels - 1910.177
- Toxic and hazardous substances - Subpart Z
- Powered industrial truck operator training – 1910.178
- Electrical - Subpart S

Scope and Applicability

1917.1

- 1917 – Shore based cranes
- 1918 – Ship's cranes and gear



Scope and Applicability

1917.1

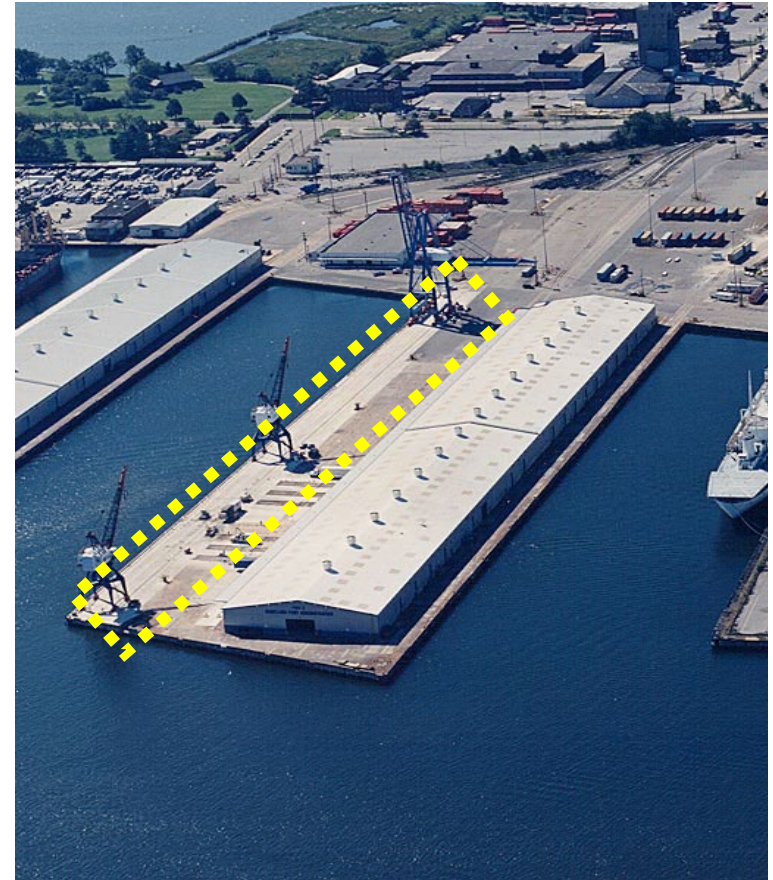
- Does not include manufacturing areas



Definitions

1917.2

- **Apron** – means that portion of a marine terminal immediately adjacent to a vessel berth
- Used in direct transfer of cargo between terminal and vessel



Definitions

1917.2

- **Authorized**

- A person selected by an employer for a specific purpose



Definitions

1917.2

- **Cargo door (transit shed door)**
 - A door designed to permit transfer of cargo to and from a marine terminal structure



Definitions

1917.2

- **Cargo packaging**

- Method of containment for shipment, including cases, cartons, crates and sacks
- Excludes large units such as intermodal containers, vans or similar devices



Definitions

1917.2

- **Confined space** – a space having all of the following characteristics:
 - Small size
 - Severely limited natural ventilation
 - Capability to accumulate or contain a hazardous atmosphere
 - Exits that are not readily accessible
 - A design not meant for continuous human occupancy



Definitions

1917.2

- **Conveyor**

- A device designed exclusively for transporting bulk materials, packages or objects.
- In a predetermined path having fixed or selective points of loading or discharge.

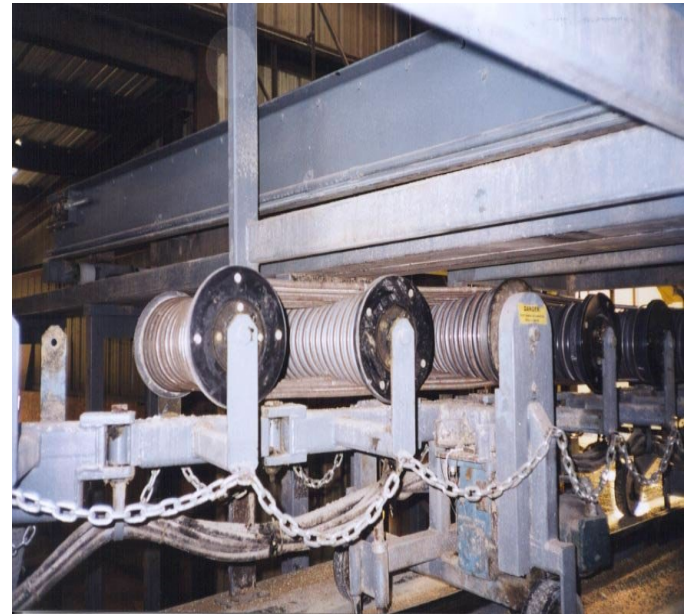


Definitions

1917.2

- **Danger zone**

- Any place in or about a machine or equipment where employee;
 - » Struck by
 - » Caught between
 - » Burned by hot surfaces
 - » Exposed to electrical shock



Definitions

1917.2

- **Designated person**

- A person who possesses specialized abilities in a specific area, *and*
- Is assigned by employer to perform a specific task in that area



Definitions

1917.2

● Dock

- A wharf or pier forming all or part of a waterfront facility
- Including marginal or quayside berthing facilities



Definitions

1917.2

- **Dockboard (car and bridge plates)**
 - A device for spanning short distances between rail cars or highway vehicles and loading platforms



Definitions

1917.2

- **Enclosed space**

- Indoor space, other than a confined space
- May contain or accumulate a hazardous atmosphere due to inadequate natural ventilation



Definitions

1917.2

● Examination

- As applied to material handling devices required to be certificated;
 - » A comprehensive survey consisting of criteria outlined in 1919.71(d) as applicable to type of gear or device
 - » Examination is supplemented by a unit proof load test in case of a quadrennial survey



Definitions

1917.2

- **Flammable atmosphere**

- An atmosphere containing more than 10% of lower flammable limit of;
 - » A flammable or,
 - » Combustible vapor or,
 - » Dust mixed with air



Definitions

1917.2

● Front-end attachments - as applied to PITs

- Means the various devices
 - » Roll clamps
 - » Magnets
 - » Rams
 - » Crane arms or booms
 - » Buckets
 - » Etc.
- Attached to load end for handling



Definitions

1917.2

- **Front-end attachments - as applied to cranes**
 - Means various attachments applied to basic machine for performance of functions;
 - » Such as lifting,
 - » Clamshell or,
 - » Magnet services





Definitions

1917.2

- **Fumigant**

- A substance or mixture of substances
 - » Used to kill pests or prevent infestation
 - » Which is a gas or is rapidly or progressively transformed to gaseous state



Definitions

1917.2

- **Hazardous cargo, material, substance or atmosphere means:**
 - Any substance listed in 1910, Subpart Z
 - Any material in the Hazardous Materials Table and Hazardous Communications Regulations of the DOT, 49 CFR Part 172
 - Any article not properly described in 49 CFR Part 172 but is properly classified under the definition of those categories or dangerous articles in 49 CFR Part 173
 - Any atmosphere with an oxygen content of less than 19.5%

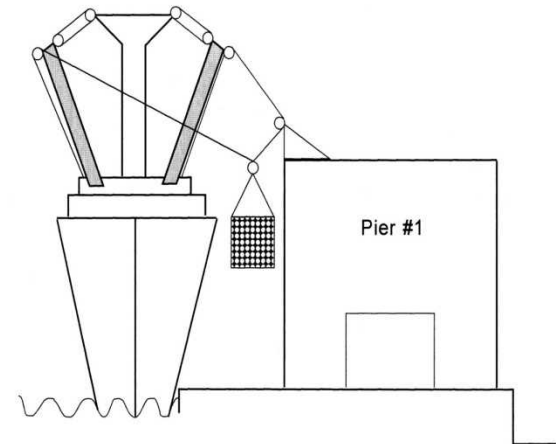


Definitions

1917.2

● House falls

- Spans and supporting members, winches, blocks, and rigging forming a part of a marine terminal
- Used with a vessel's cargo gear to load and unload cargo



Definitions

1917.2

- **Inspection**

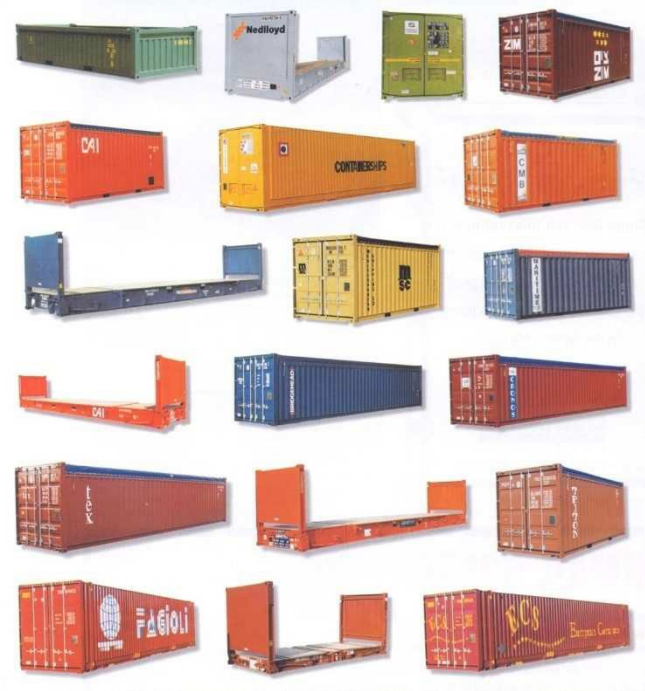
- As applied to material handling devices required by this Part to be certified
 - » A complete visual examination of all visible part of the device



Definitions

1917.2

- **Intermodal containers**
 - A reusable cargo container of a rigid construction and rectangular configuration



Definitions

1917.2

- **Loose gear**

- Removable and replaceable components of equipment or devices
- May be used with or as part of assembled material handling units
 - » For making connections
 - » Changing line direction
 - » Multiplying mechanical advantage



Definitions

1917.2

- **Marine terminal**

- Wharves, bulkheads, quays, piers, docks, and adjacent storage
- Areas and structures associated with primary movement of cargo



Definitions

1917.2

- **Ramps**

- Other flat-surface devices for passage between levels and across openings not covered under “dockboards”



Incorporation by Reference

1917.3

- Consensus standards have to be approved by Federal Register
- These standards have same force and effect as other standards in this part
 - ANSI A14.1 -- Safety Requirements for Portable Wood Ladders
 - ANSI A14.2 -- Safety Requirements for Portable Metal Ladders
 - ANSI A14.5 -- Safety Requirements for Portable Reinforced Plastic Ladders



Incorporation by Reference

1917.3

- ANSI Z-87.1 -- Practice for Occupational and Educational Eye and Face Protection
- ANSI Z-89.1 -- Personnel Protection – Protective Headwear for Industrial Workers – Requirements
- ANSI Z-41 -- American National Standard for Personal Protection – Protective Footwear
- ASME B56.1 – Safety Code for Powered Industrial Trucks



Thank You For Attending!

Final Questions?

1-800-NC-LABOR

(1-800-625-2267)

www.nclabor.com

