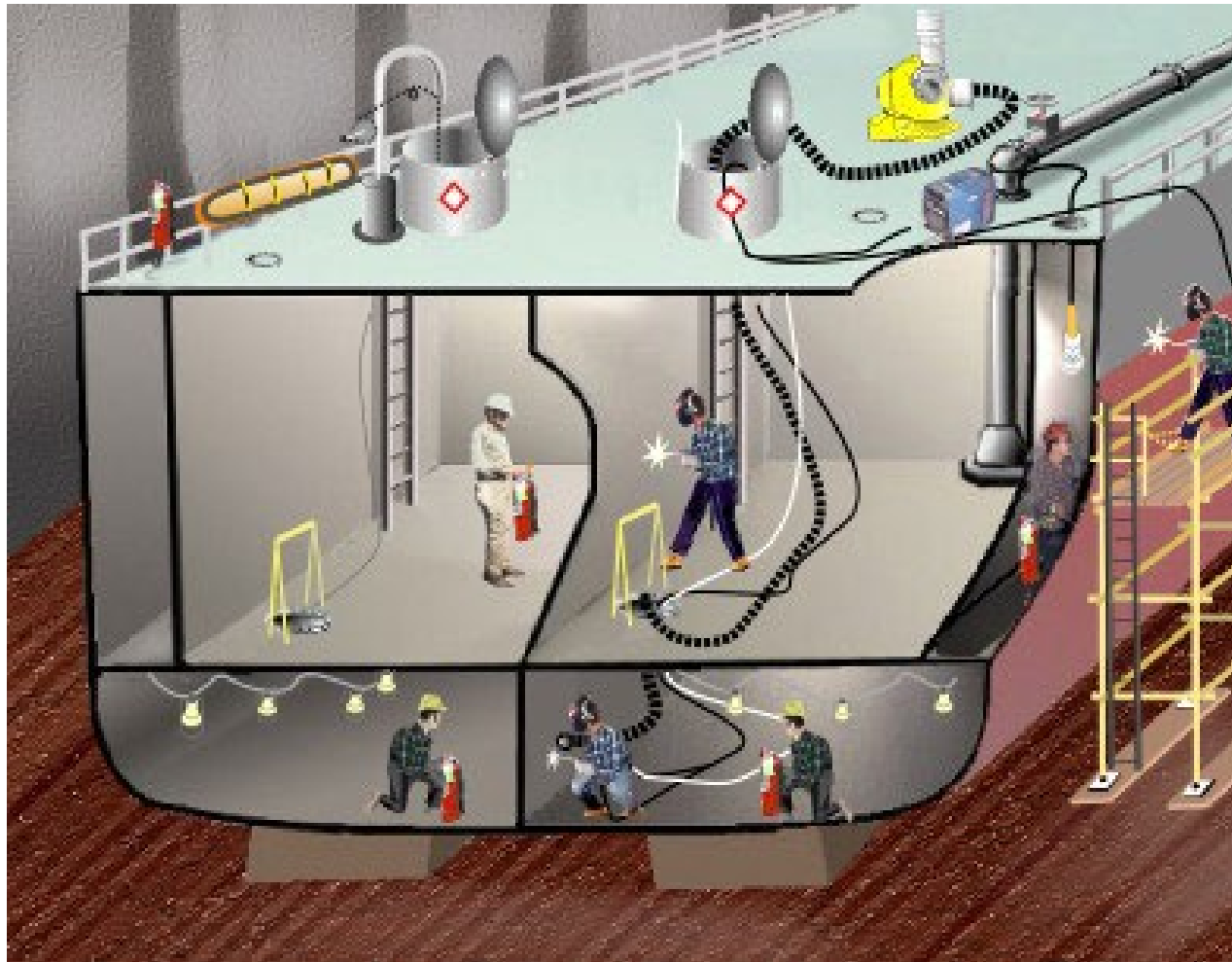


Shipyard Employment

Fire Protection in Shipyard Employment - Subpart P



Fire Protection in Shipyard Employment

29 CFR 1915

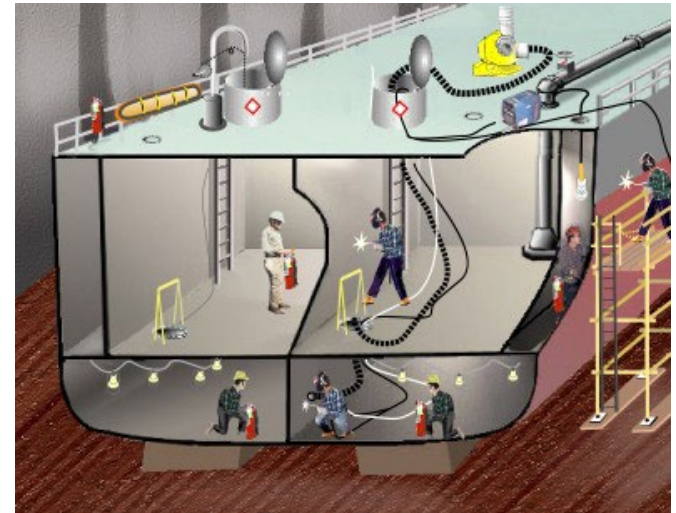
- **Subpart P**

- 1915.501 – General Provisions
- 1915.501 – Fire safety plan
- 1915.503 – Precautions for hot work
- 1915.504 – Fire watches
- 1915.505 – Fire response
- 1915.506 – Hazards of fixed extinguishing systems on board vessels and vessel sections

Fire Protection in Shipyard Employment

29 CFR 1915

- 1915.507 – Land-side fire protection systems
- 1915.508 – Training
- 1915.509 – Definitions applicable to this subpart
- 1915 Appendix A – Model Fire Safety Plan (Non-Mandatory)



General Provisions

1915.501(d)(1)

- Multi-employer worksite
 - Inform employers about fire safety plan
 - Responsibilities for fire protection assigned
 - Each host employer communicate information about fire-related hazards



General Provisions

1915.501(d)(2)

- Contract employer responsibilities
 - Notify host employer about fire-related hazards
 - Advise host employer of previously unidentified fire-related hazards



Fire Safety Plan

1915.502(a)

- Develop and implement written fire safety plan
 - Actions taken to ensure safety in event of fire



Fire Safety Plan

1915.502(b)

- Identify significant fire hazards
- Alarm procedures
- Procedures for evacuation
- Procedures to account for all employees



Precautions for Hot Work

1915.503(a)(1)

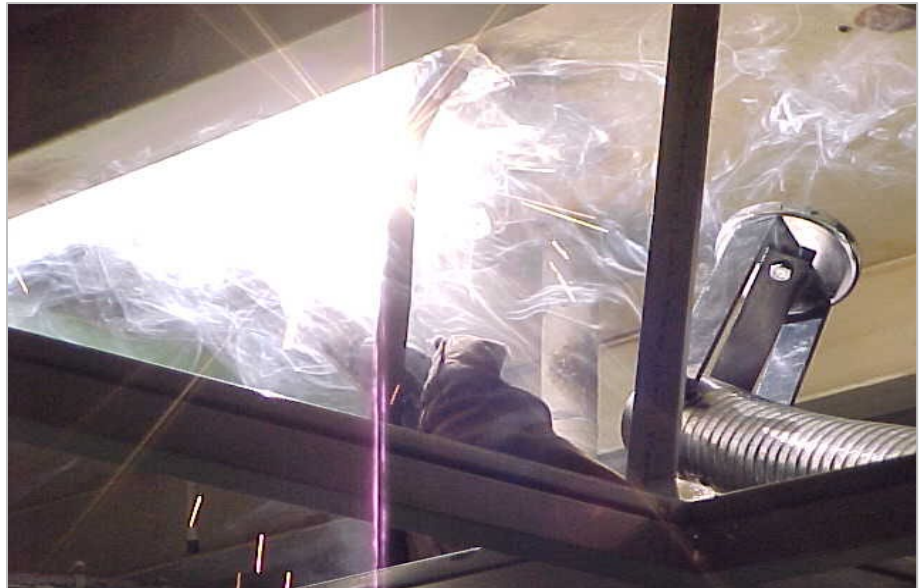
- Designated areas for hot work
- Free of fire hazards



Precautions for Hot Work

1915.503(a)(2)

- Hot work in non-designated area
 - Visually inspect area
 - Free of fire hazards



Precautions for Hot Work

1915.503(b)(1)

- Maintain fire hazard-free conditions



Precautions for Hot Work

1915.503(b)(2)(i)-(ii)

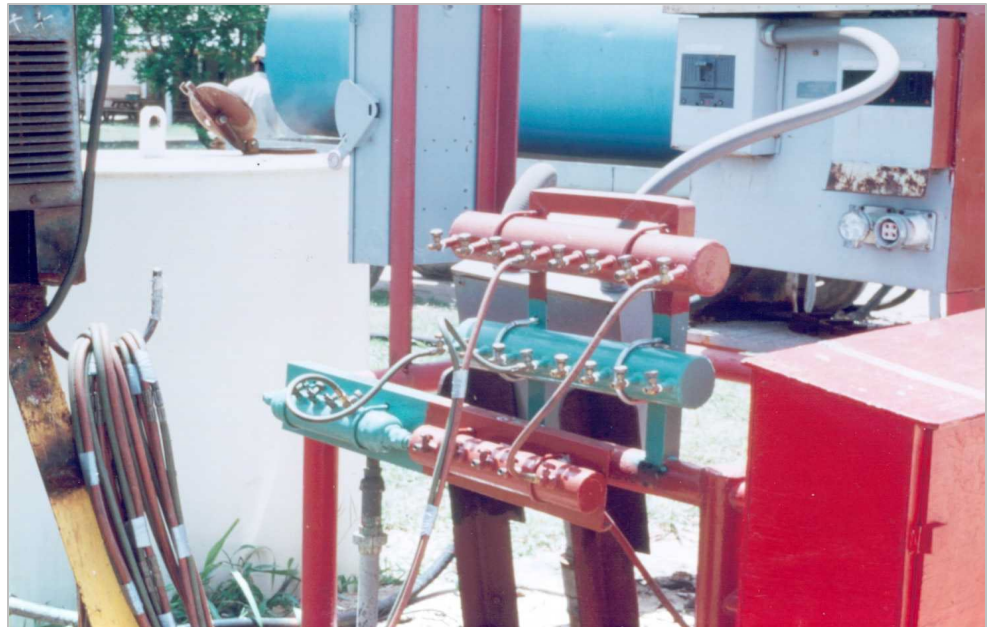
- No unattended fuel gas and oxygen hose lines or torches in confined spaces
- No unattended fuel gas and oxygen hose lines or torches in enclosed spaces
 - More than 15 minutes



Precautions for Hot Work

1915.503(b)(2)(iii)

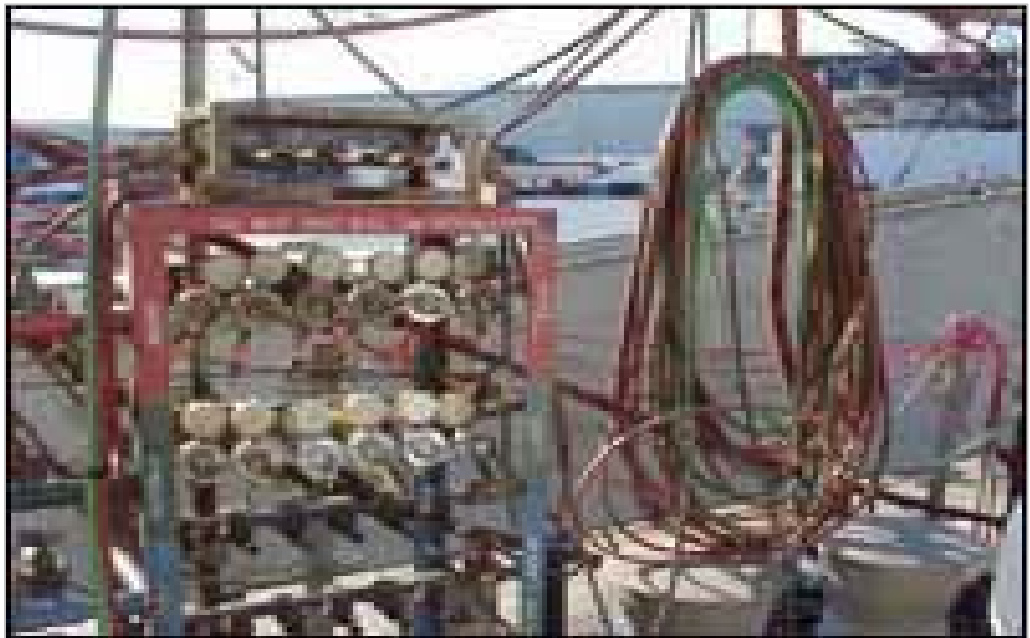
- Fuel gas and oxygen hose lines disconnected at supply manifold
 - At end of each shift



Precautions for Hot Work

1915.503(b)(2)(iv)

- Disconnected fuel gas and oxygen hose lines
 - Rolled back to supply manifold or open air
 - » To disconnect torch



Fire Watches

1915.504(a)

- Written fire watch policy
 - Training given
 - Duties performed
 - Equipment given
 - PPE available and worn



Fire Watches

1915.504(b)

- Posting fire watches

- Slag, weld splatter, or sparks pass through opening and cause fire
- Combustible materials closer than 35 feet
- Hot work near insulation, combustible coatings, etc.
- Close to unprotected combustible pipe or cable runs



Fire Watches

1915.504(c)(1)-(2)

- Assigning employees to fire watch duty
 - No other duties while hot work in progress
- Clear view and immediate access to all areas included in fire watch



Fire Response

1915.505(a)

- Decide type of response provided
- Create, maintain, and update written policy
 - Describe internal and outside response organizations used
 - Evacuation procedures



Fire Response

1915.505(b)(1)

- Internal fire response
 - Structure of fire response organization
 - Number of trained employees
 - Fire response functions
 - Frequency of training



Fire Response

1915.505(b)(2)

- Outside fire response
 - Types of incidents expected to respond
 - Liaisons between employer and outside organizations
 - Plan for fire response functions



Fire Response

1915.505(b)(3)

- Combination internal and outside fire response
 - Basic organizational structure
 - Number combined trained fire responders
 - Frequency of joint training



Fire Response

1915.505(b)(4)

- Employee evacuation
 - Emergency escape procedures
 - Account for employees
 - Reporting fires and other emergencies



Fire Response

1915.505(b)(5)

- Rescue and emergency response
 - Description of emergency rescue procedures
 - Names of employees assigned to perform rescue



Fire Response

1915.505(c)(1)

- Medical requirements for fire response employees
 - Receive medical exam
 - Required to wear respirators – meet 1915.154
 - Annual medical exam
 - Medical records maintain in accordance with 1910.1020



Fire Response

1915.505(e)(1)(i)

- Supply fire response employees with appropriate PPE and equipment at no cost



Fire Response

1915.505(f)(1)

- Equipment maintenance – personal protective equipment
 - Inspect and maintain PPE
- Keep fire response equipment in state of readiness



Fixed Extinguishing Systems on Board Vessels

1915.506(b)(1)–(2)

- Physically isolate systems or other positive means
 - Prevent systems discharge
 - Train to recognize system discharge and evacuation alarms



Fixed Extinguishing Systems on Board Vessels

1915.506(g)(1)-(3)

- Authorized employees allowed to activate system
- Authorized employees trained to operate and activate systems
- Employees evacuated before system activated



Land-side Fire Protection Systems

1915.507(b)

- Select, install, inspect, maintain and test portable fire extinguishers



Land-side Fire Protection Systems

1915.507(c)(1)

- Fixed extinguishing system component or extinguishing agent
 - Approved by OSHA NRTL
 - Use on specific hazards expected to control or extinguish



Training

1915.508(b)(1)-(2)

- All employees trained
 - Emergency alarm signals
 - System discharge alarms
 - Evacuation alarms
 - Primary and secondary evacuation routes



Training

1915.508(e)(1)

- Each fire watch trained by instructor
 - Adequate fire watch knowledge and experience



Training

1915.508(f)

- Records kept demonstrating employees trained
 - Records include; employee' name, trainer's name, type of training, date(s) of training



Thank You For Attending!

Final Questions?

1-800-NC-LABOR

(1-800-625-2267)

www.nclabor.com

