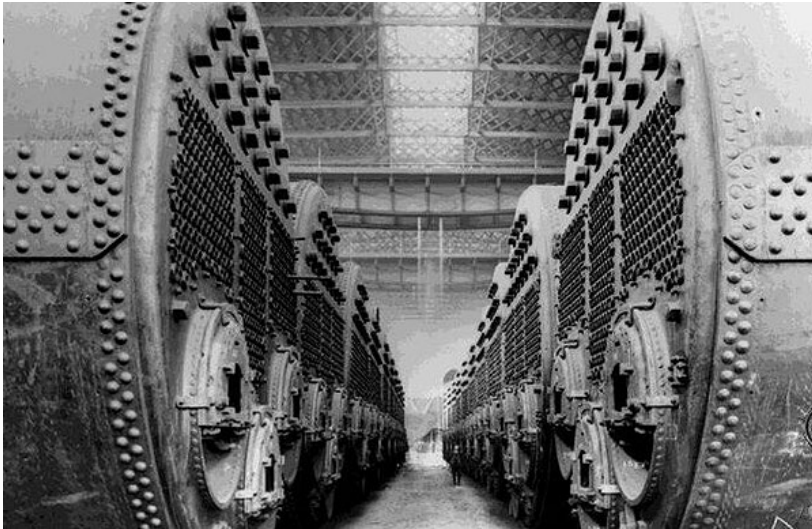


Shipyard Employment

Ship's Machinery and Piping System Subpart J



Titanic's Boilers – coal fired



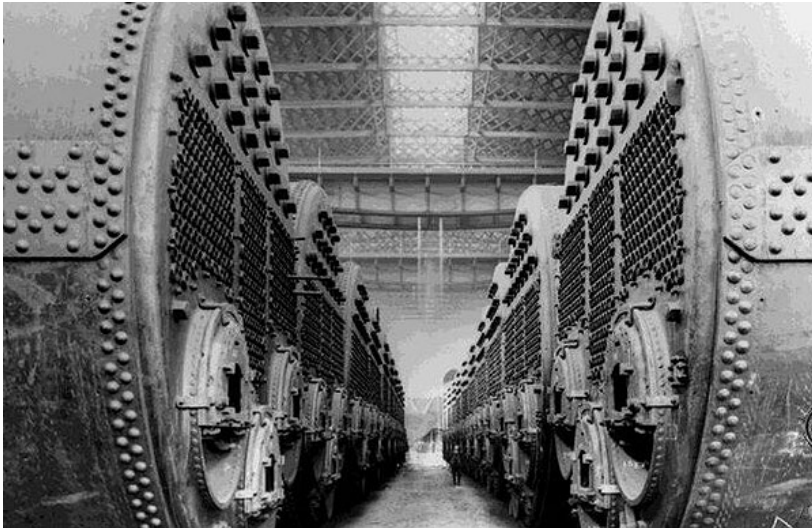
Oil fired boiler

Ship's Machinery and Piping System - Subpart J

- **1915.161** – Scope and application
- **1915.162** – Ship's boilers
- **1915.163** – Ship's piping system
- **1915.164** – Ship's propulsion machinery
- **1915.165** – Ship's deck machinery

Ship's Boilers

1915.162



Titanic's Boilers – coal fired

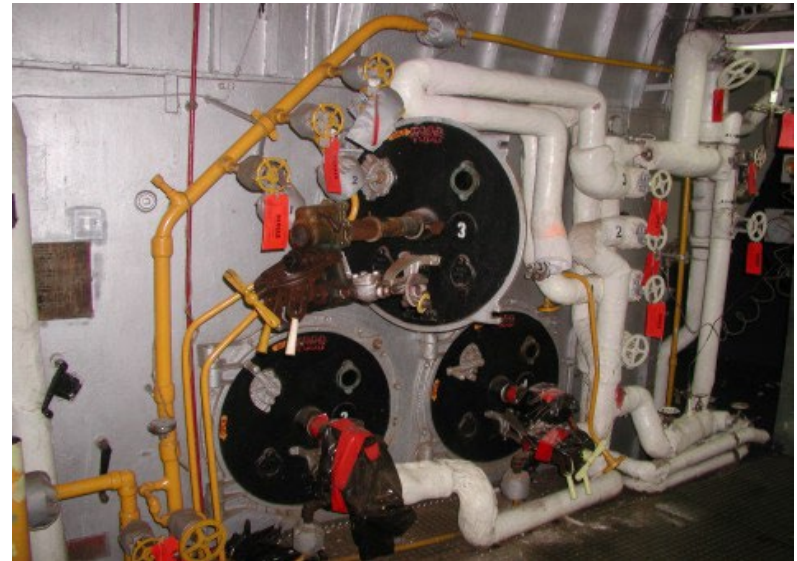


Oil fired boiler

Ship's Boilers

1915.162(a)(1)

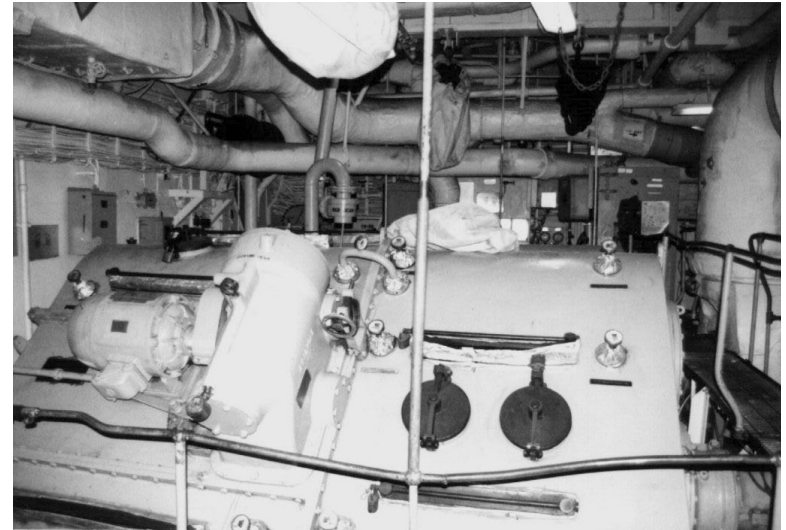
- Work performed in fire, steam, or water spaces of boiler
 - Injury from direct escape of high temperature medium
 - » Steam, water, oil, or other medium at a high temperature
 - » Entering from interconnecting system
 - Isolation and shutoff valves connecting dead boiler with live system or systems
 - » Secured, blanked, and tagged indicating employees working in boiler



Ship's Propulsion Machinery

1915.164

- Work performed on main engine, reduction gear, or connecting accessories
 - Jacking gear engaged to prevent main engine turning over
 - Sign posted at throttle indicating jacking gear engaged
 - Sign not removed until jacking gear safely disengaged



Ship's Deck Machinery

1915.165

- Work performed on anchor windlass or any attached accessories
 - Devil claws made fast to anchor chains
 - Riding pawls in engaged position
 - In absence of devil claws and riding pawls
 - » Anchor chains secured to suitable fixed structure of vessel



Thank You For Attending!

Final Questions?

1-800-NC-LABOR

(1-800-625-2267)

www.nclabor.com

