

# Tools and Related Equipment - Subpart H

---



# Tools and Related Equipment

---

Subpart H

- 1915.131 – General precautions
  - 1915.132 – Portable electric tools
  - 1915.133 – Hand tools
  - 1915.134 – Abrasive wheels
  - 1915.135 – Powder actuated fastening tools
  - 1915.136 – Internal combustion engines, other than ship's equipment
-

# General Precautions

---

1915.131(c)

- Portable, power-driven circular saws equipped with guards above and below base plate or shoe

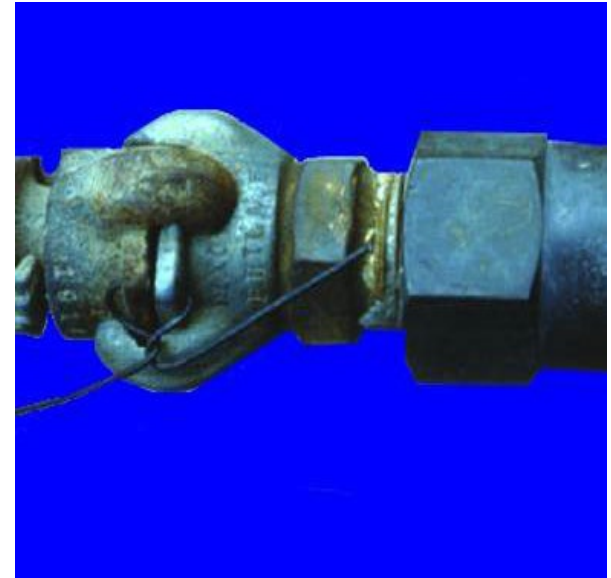


# General Precautions

---

1915.131(e)

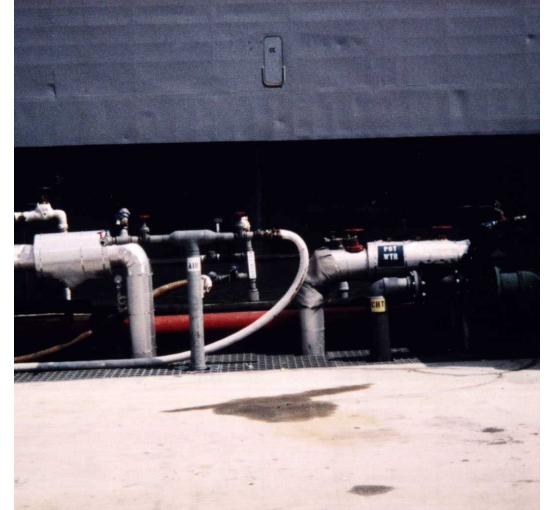
- Before use, pneumatic tools shall be secured to the extension hose or whip by some positive means to prevent the tool from becoming accidentally disconnected from the whip.



# General Precautions

1915.131(g)

- Headers, manifolds and widely spaced hose connections on compressed air lines
  - Bear the word "air" in letters at least 1- inch high
  - Painted either on the manifolds or separate hose connections, **or**
  - On signs permanently attached to the manifolds or connections
  - Grouped air connections may be marked in one location



# Portable Electric Tools

1915.132(a)

- The frames of portable electric tools and appliances, except double insulated tools approved by Underwriters' Laboratories
  - Grounded either through a third wire in the cable containing the circuit conductors **or**
  - Through a separate wire which is grounded at the source of the current.

Plug with a  
grounding  
pin



Double  
insulated  
markings





# Portable Electric Tools

---

1915.132(c)

- Portable electric tools which are held in the hand shall be equipped with switches of a type which must be manually held in the closed position.



# Portable Electric Tools

---

1915.132(d)

- Worn or frayed electric cables shall not be used.





# Hand Tools

---

1915.133(a), (c) - (d)

- Employers shall not issue or permit the use of unsafe hand tools.
- Impact tools, such as drift pins, wedges, and chisels, shall be kept free of mushroomed heads.
- The wooden handles of tools shall be kept free of splinters or cracks and shall be kept tight in the tool.



# Abrasive Wheels

1915.134(b)

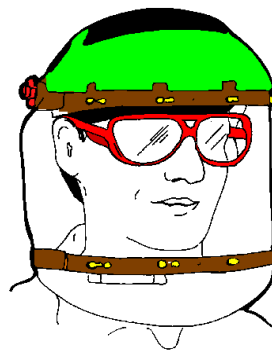
- Floor and bench mounted grinders shall be provided with work rests rigidly supported and readily adjustable.
- Work rests shall be kept a distance not to exceed 1/8 inch from the surface of the wheel.



# Abrasive Wheels

1915.134(j)

- All employees using abrasive wheels shall be protected by eye protection equipment in accordance with the requirements of Subpart I of this part
  - Except when adequate eye protection is afforded by eye shields which are permanently attached to the bench or floor stand.



# Powder Actuated Fastening Tools 1915.135(b)(1)

---

- Powder actuated fastening tools shall be tested each day before loading to ensure that the safety devices are in proper working condition.
- Any tool found not to be in proper working order shall be immediately removed from service until repairs are made.



1915.135(c)

- Before employees are permitted to use powder actuated tools, they shall have been thoroughly instructed by a competent person with respect to the requirements of paragraph (b) of this section and the safe use of such tools.

**HILTI** M 875182

**TRAINED OPERATOR**  
of Actuated Tools

DATE: 222  
528074 6 Jun  
SOCIAL SECURITY NO. DATE OF BIRTH

States that Mr. [redacted] Anderson  
NAME OF OPERATOR-PRINTED  
received the prescribed training in the operation of powder operated tools manufactured by  
**HILTI, INC.**

T. DY36 M, Dk 350, Dk  
NAME (LAST, FIRST, MIDDLE) POSITION

[redacted] 31091  
SIGNATURE OF SUPERVISOR OR INSTRUCTOR INSTRUCTIONS FOR CARD NO.

received the instruction in the safe operation and maintenance of powder actuated tools of the makes and models specified and agree to conform to all rules governing their use.

**SIGNATURE** M. L. J. [redacted]  
Revocation of card - Failure to comply with any of the rules or regulations for safe operation of powder actuated fastening tools shall be cause for the immediate revocation of this card, and it may be surrendered upon demand of the proper authority.

**HILTI** M 875182

# Internal Combustion Engines 1915.136(a)

---

- When internal combustion engines furnished by the employer are used in a fixed position below decks, for such purposes as driving pumps, generators, and blowers
  - The exhaust shall be led to the open air, clear of any ventilation intakes and openings through which it might enter the vessel.





# Internal Combustion Engines 1915.136(c)

---

- When internal combustion engines exhaust into the atmosphere below decks:
  - Competent person shall make tests of the carbon monoxide content frequently to ensure that dangerous concentrations do not develop.
  - Employees shall be removed from the compartment involved when the carbon monoxide concentration exceeds 50 parts per million.
  - Employer shall use blowers sufficient in size and number and so arranged as to maintain the concentration below the allowable limit before work is resumed.



# Thank You For Attending!

---

## Final Questions?

**1-800-NC-LABOR**

**(1-800-625-2267)**

***[www.nclabor.com](http://www.nclabor.com)***

