

Shipyard Employment

General Provisions - Subpart A



General Provisions - Subpart A

- 1915.4 – Definitions
- 1915.5 – Incorporation by reference
- 1915.6 – Commercial diving operations
- 1915.7 – Competent person



Definitions

1915.4

- **“Hazardous substance”** – a substance which by reason of being explosive, flammable, poisonous, corrosive, oxidizing, irritant, or otherwise harmful is likely to cause injury.
- **“Competent person”** - a person who is capable of recognizing and evaluating employee exposure to hazardous substances or to other unsafe conditions and is capable of specifying the necessary protection and precautions to be taken.

Definitions

1915.4

- **“Confined space”** - compartment of small size and limited access
 - Its small size and confined nature can create or aggravate a hazardous exposure
- **“Enclosed space”** - any space, other than a confined space, which is enclosed by bulkheads and overhead



Definitions

1915.4

- **“Hot work”** - riveting, welding, burning or other fire or spark producing operations
- **“Cold work”** – work which does not involve riveting, welding, burning or other fire or spark producing operations



Definitions

1915.4

- **“Hazardous material”** – has one or more of the following characteristics:
 - Flash point below 140° F
 - Threshold limit value below:
 - » Below 500 ppm – gas or vapor
 - » Below 500 mg./m³ – fumes
 - » Below 25 mppcf – dust
 - Single dose oral LD₅₀ below 500 mg./kg.
 - Subject to polymerization with release of large amount of energy
 - Strong oxidizer or reducing agent
 - Causes first degree burns to skin, or toxic by skin contact
 - May produce dusts, gases, fumes, vapors, mists



Incorporation by Reference

1915.5

- ANSI A14.1-1975 - Safety Requirements for Portable Wood Ladders
- ANSI A14.2-1972 – Safety Requirements for Portable Metal Ladders
- ANSI B7.1-1964 – Safety Code for the Use, Care, and Protection of Abrasive Wheels
- ANSI Z87.1-1989 – Practice for Occupational and Educational Eye and Face Protection
- ANSI Z89.1-1986 – Personal Protection – Protective Headgear for Industrial Workers Requirements
- ANSI Z41-1991 – Personal Protection – Protective Footwear
- ASME Boiler and Pressure Vessel Code, Section VIII, Rules for Construction of Unfired Pressure Vessels
- ACGIH – Threshold Limit Values, 1970

Commercial Diving Operations

1915.6

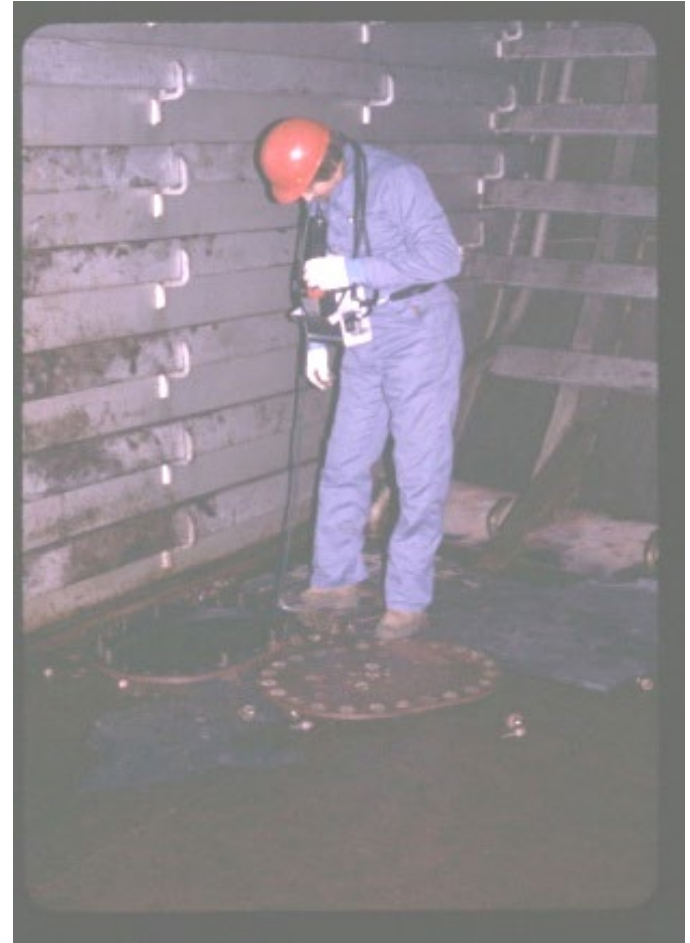
- Commercial diving operations are subject to Subpart T of part 1910



Competent Person

1915.7

- One or more competent persons designated by employer
- Maintain roster of designated competent persons or statement Marine Chemist will perform tests or inspections.
- Roster must contain:
 - Employer's name
 - Designated competent person's name(s)
 - Date employee was trained as competent person



Competent Person

1915.7

- Recordkeeping

- Test performed by competent person, marine chemist or CIH must record:
 - » Location, time, date, location of inspected spaces, operations performed, test results, and any instructions
- Posted in vicinity of affected operations
- Records maintained at least three months after completion of job
- Records available for inspection



1915.7

Thank You For Attending!

Final Questions?

1-800-NC-LABOR

(1-800-625-2267)

www.nclabor.com

