

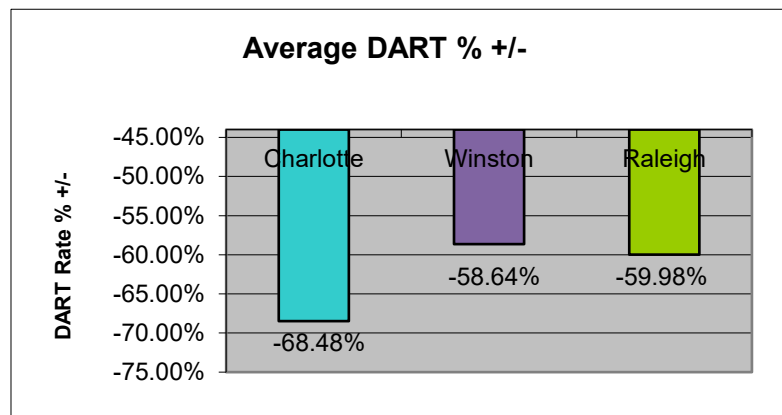
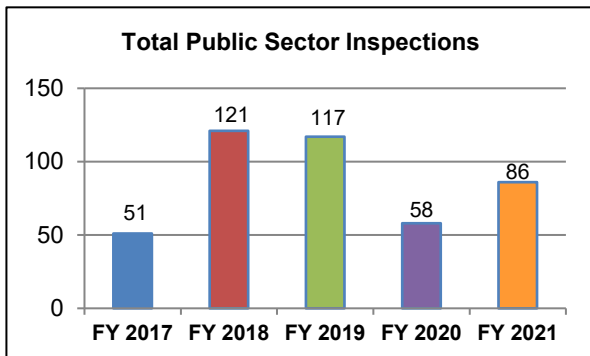
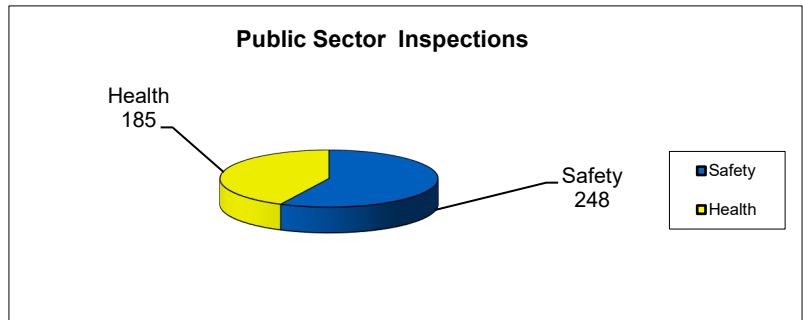
**Public Sector Targeting Program
(Programmed Planned Inspections Only)
Statistical Comparison
FY 2017 - FY 2021**

<i>Safety</i>	Charlotte	Asheville/ Winston-Salem	Raleigh/ Wilmington	TOTALS
Public Sector Inspections	48	144	56	248
# Serious Violations	35	106	23	164
# OTS Violations	81	179	116	376
# Repeat Violations	36	87	20	143
Total # Violations	152	372	159	683
Total Penalty Amt.	\$57,309	\$168,111	\$52,985	\$278,405
Average DART % +/-	-69.37%	-64.40%	-58.27%	-64.01%

<i>Health</i>	Charlotte	Asheville/ Winston-Salem	Raleigh/ Wilmington	TOTALS
Public Sector Inspections	78	74	33	185
# Serious Violations	47	57	15	119
# OTS Violations	64	57	52	173
# Repeat Violations	43	42	29	114
Total # Violations	154	156	96	406
Total Penalty Amt.	\$80,175	\$65,362	\$31,589	\$177,126
Average DART % +/-	-67.59%	-52.88%	-61.69%	-60.72%

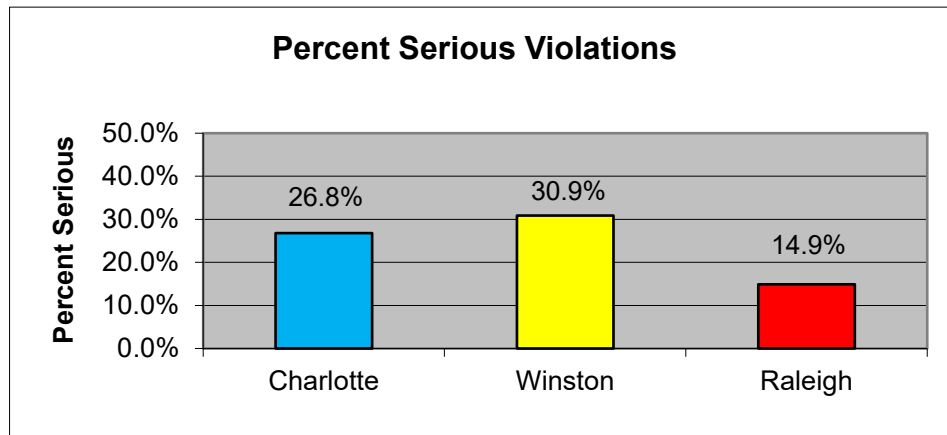
TOTALS

Public Sector Inspections	433
# Serious Violations	283
Total # Violations	1,089
Total Penalty Amts.	\$455,531
Average DART % +/-	-62.37%

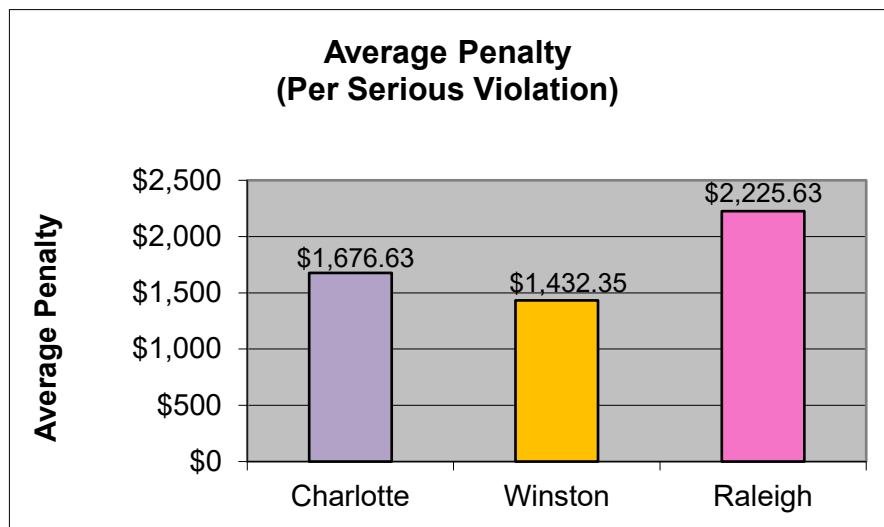


**Public Sector Targeting Program
(Programmed Planning Inspections Only)
Statistical Comparison
FY 2017 - FY 2021**

<u>Charlotte</u>		<u>Asheville/ Winston-Salem</u>		<u>Raleigh/ Wilmington</u>	
# Serious Violations	82	# Serious Violations	163	# Serious Violations	38
Total # Violations	306	Total # Violations	528	Total # Violations	255
Percent Serious:	26.8%	Percent Serious:	30.9%	Percent Serious:	14.9%



<u>Charlotte</u>		<u>Asheville/ Winston-Salem</u>		<u>Raleigh/ Wilmington</u>	
# Serious Violations	82	# Serious Violations	163	# Serious Violations	38
Total Penalty Amts.	\$137,484	Total Penalty Amts.	\$233,473	Total Penalty Amts.	\$84,574
Average Penalty:	\$1,676.63	Average Penalty:	\$1,432.35	Average Penalty:	\$2,225.63



**Public Sector Targeting Program
(Programmed Planned Inspections Only)
Statistical Comparison
FY 2017 - FY 2021**

Charlotte

Total # Violations 306
Total # Inspections
WITH Violations 93

**Average Violations
Per Inspection: 3.3**

**Asheville/
Winston-Salem**

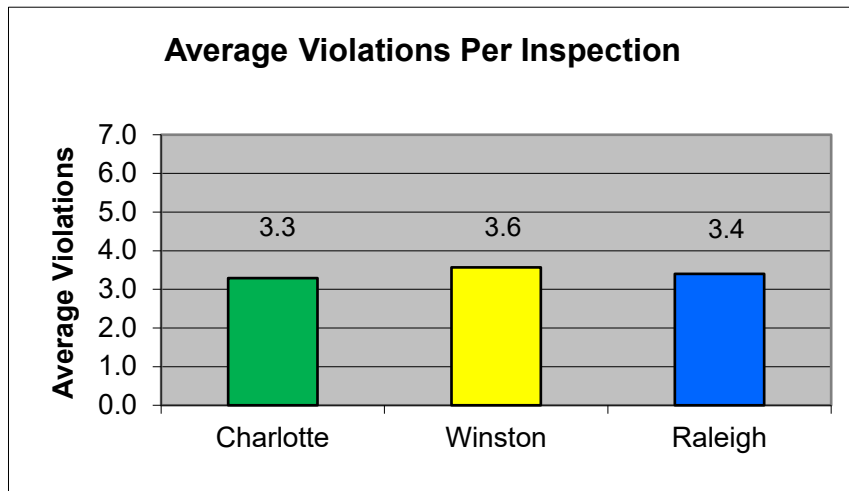
Total # Violations 528
Total # Inspections
WITH Violations 148

**Average Violations
Per Inspection: 3.6**

**Raleigh/
Wilmington**

Total # Violations 255
Total # Inspections
WITH Violations 75

**Average Violations
Per Inspection: 3.4**



Charlotte

Total # Inspections WITH Violations 93
Total # Inspections 126

**Percent Inspections
In-Compliance: 26.2%**

**Asheville/
Winston-Salem**

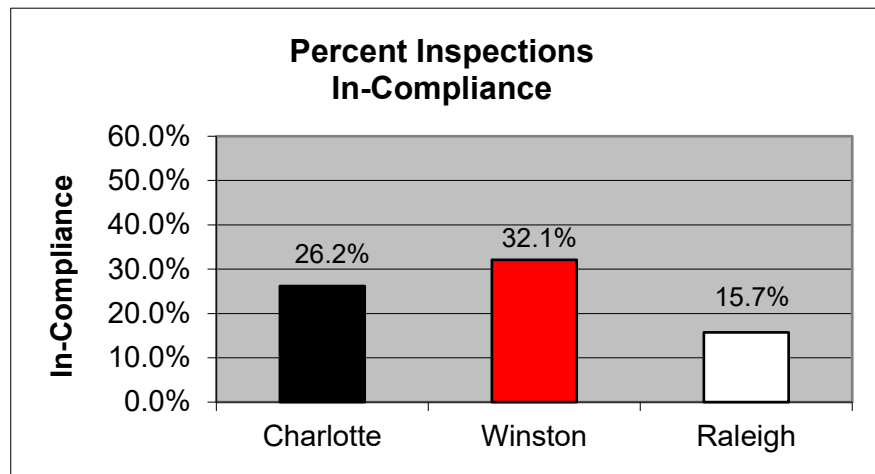
Total # Inspections WITH Violations 148
Total # Inspections 218

**Percent Inspections
In-Compliance: 32.1%**

**Raleigh/
Wilmington**

Total # Inspections WITH Violations 75
Total # Inspections 89

**Percent Inspections
In-Compliance: 15.7%**



Charlotte Winston Raleigh

Charlotte Winston Raleigh

Safety -69.37% -64.40% -58.27%

Health -67.59% -52.88% -61.69%

-68.48% -58.64% -59.98% -62.37%

FY 2017 51

FY 2018 121

FY 2019 117

FY 2020 58

FY 2021 86