

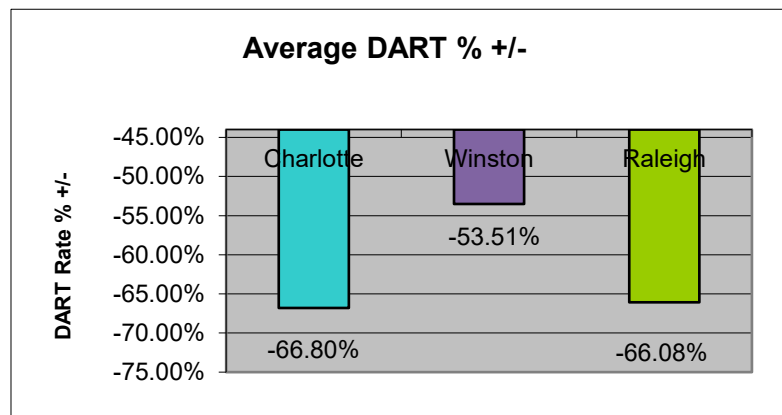
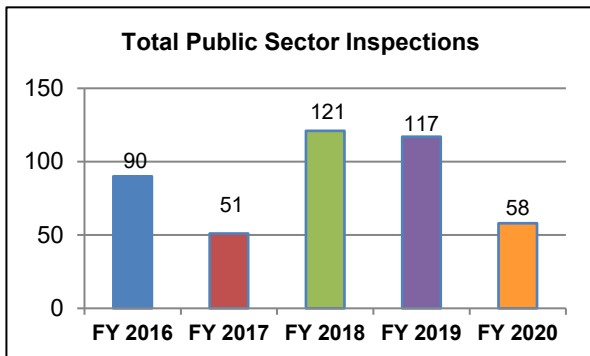
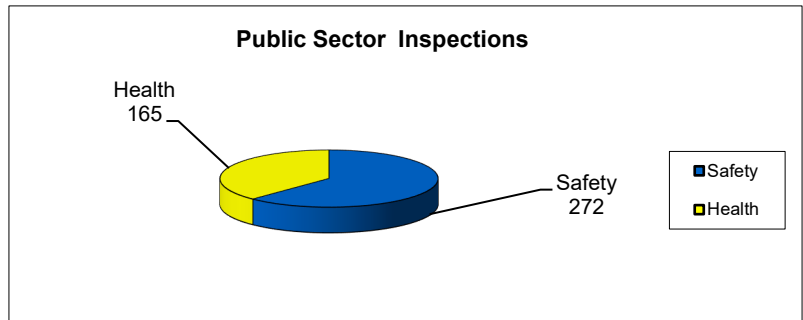
**Public Sector Targeting Program
(Programmed Planned Inspections Only)
Statistical Comparison
FY 2016 - FY 2020**

<i>Safety</i>	Charlotte	Asheville/ Winston-Salem	Raleigh/ Wilmington	TOTALS
Public Sector Inspections	42	148	82	272
# Serious Violations	31	104	31	166
# OTS Violations	84	232	146	462
# Repeat Violations	14	28	8	50
Total # Violations	129	364	185	678
Total Penalty Amt.	\$37,199	\$170,805	\$54,603	\$262,607
Average DART % +/-	-71.17%	-59.30%	-52.63%	-61.03%

<i>Health</i>	Charlotte	Asheville/ Winston-Salem	Raleigh/ Wilmington	TOTALS
Public Sector Inspections	82	60	23	165
# Serious Violations	50	36	10	96
# OTS Violations	97	61	53	211
# Repeat Violations	17	8	5	30
Total # Violations	164	105	68	337
Total Penalty Amt.	\$86,256	\$45,007	\$22,125	\$153,388
Average DART % +/-	-62.43%	-47.72%	-79.52%	-63.22%

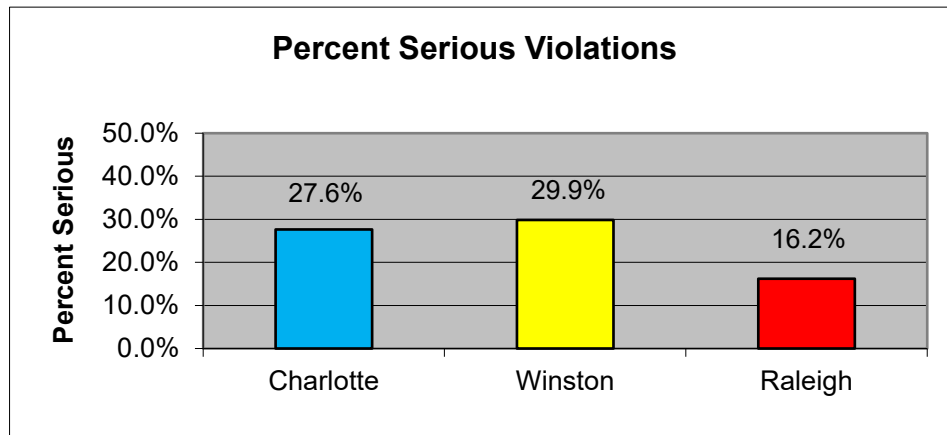
TOTALS

Public Sector Inspections	437
# Serious Violations	262
Total # Violations	1,015
Total Penalty Amts.	\$415,995
Average DART % +/-	-63.88%

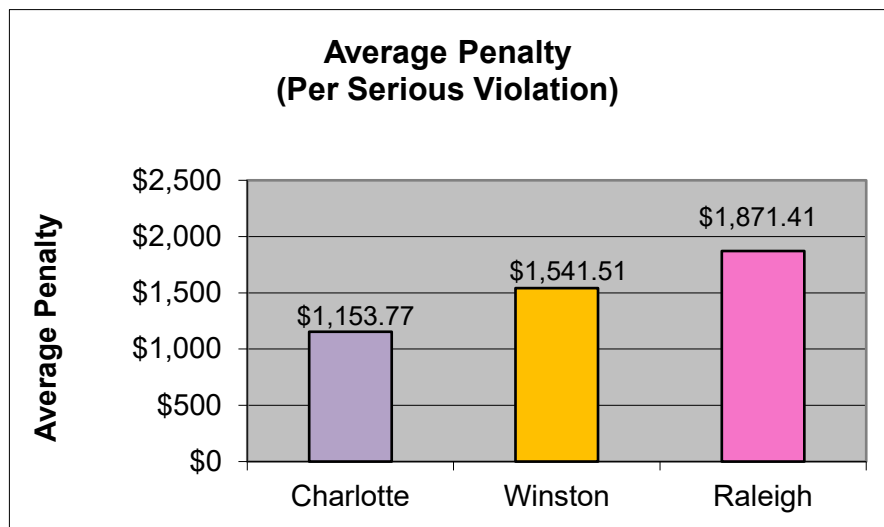


**Public Sector Targeting Program
(Programmed Planning Inspections Only)
Statistical Comparison
FY 2016 - FY 2020**

<u>Charlotte</u>		<u>Asheville/ Winston-Salem</u>		<u>Raleigh/ Wilmington</u>	
# Serious Violations	81	# Serious Violations	140	# Serious Violations	41
Total # Violations	293	Total # Violations	469	Total # Violations	253
Percent Serious:	27.6%	Percent Serious:	29.9%	Percent Serious:	16.2%



<u>Charlotte</u>		<u>Asheville/ Winston-Salem</u>		<u>Raleigh/ Wilmington</u>	
# Serious Violations	81	# Serious Violations	140	# Serious Violations	41
Total Penalty Amts.	\$93,455	Total Penalty Amts.	\$215,812	Total Penalty Amts.	\$76,728
Average Penalty:	\$1,153.77	Average Penalty:	\$1,541.51	Average Penalty:	\$1,871.41



**Public Sector Targeting Program
(Programmed Planned Inspections Only)
Statistical Comparison
FY 2016 - FY 2020**

Charlotte

Total # Violations 293
Total # Inspections
WITH Violations 92

**Average Violations
Per Inspection:** 3.2

**Asheville/
Winston-Salem**

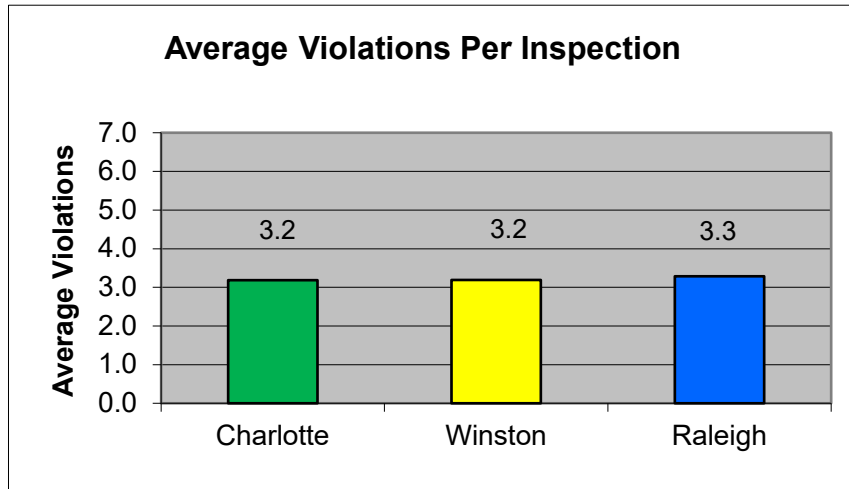
Total # Violations 469
Total # Inspections
WITH Violations 147

**Average Violations
Per Inspection:** 3.2

**Raleigh/
Wilmington**

Total # Violations 253
Total # Inspections
WITH Violations 77

**Average Violations
Per Inspection:** 3.3



Charlotte

Total # Inspections WITH Violations 92
Total # Inspections 124

**Percent Inspections
In-Compliance:** 25.8%

**Asheville/
Winston-Salem**

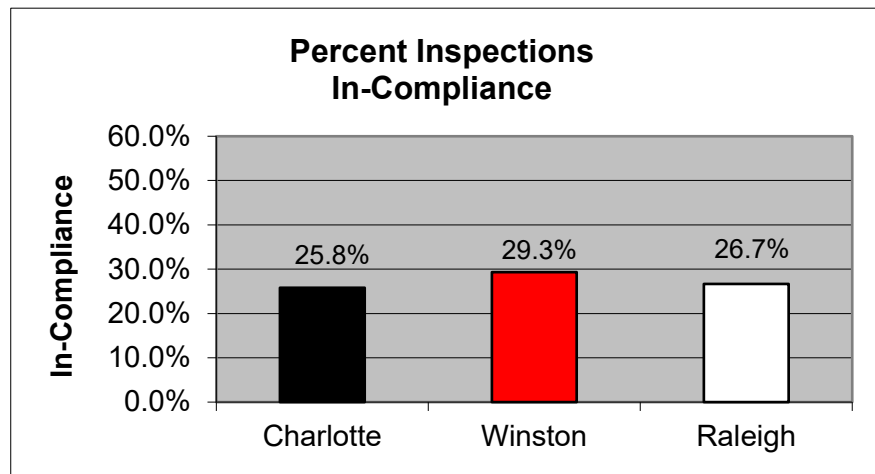
Total # Inspections WITH Violations 147
Total # Inspections 208

**Percent Inspections
In-Compliance:** 29.3%

**Raleigh/
Wilmington**

Total # Inspections WITH Violations 77
Total # Inspections 105

**Percent Inspections
In-Compliance:** 26.7%



Charlotte Winston Raleigh

Charlotte Winston Raleigh

Safety	-71.17%	-59.30%	-52.63%
Health	-62.43%	-47.72%	-79.52%

-66.80%	-53.51%	-66.08%	-62.13%
---------	---------	---------	---------

FY 2016	90
FY 2017	51
FY 2018	121
FY 2019	117
FY 2020	58