

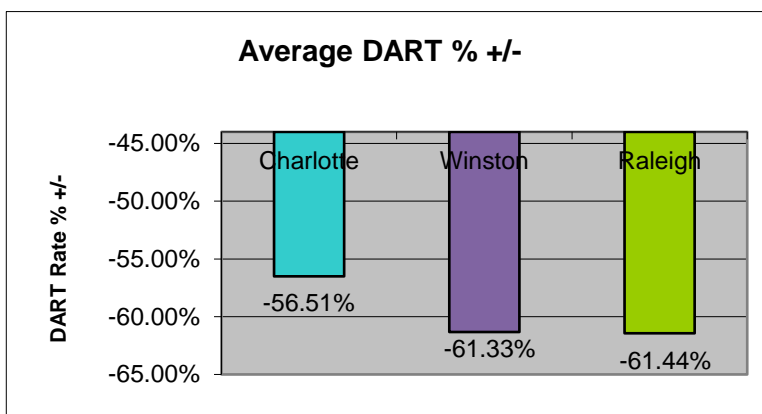
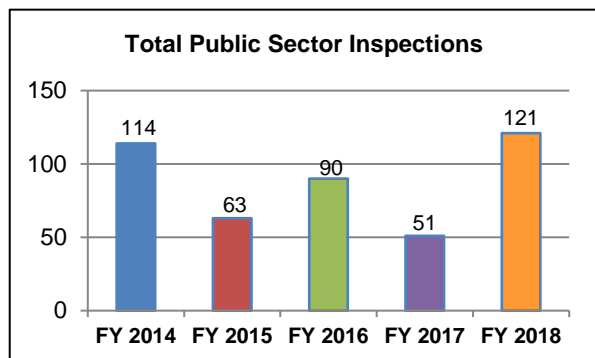
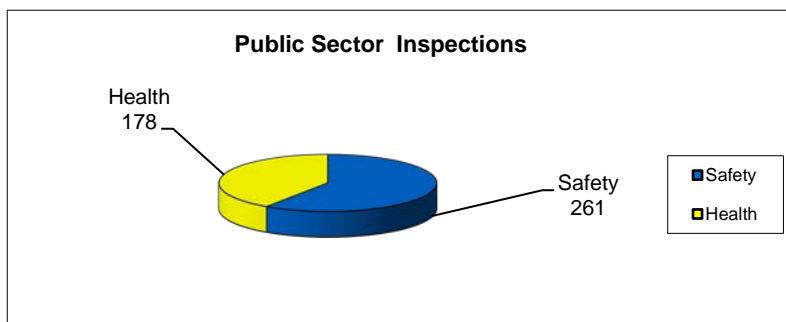
**Public Sector Targeting Program
(Programmed Planned Inspections Only)
Statistical Comparison
FY 2014 - FY 2018**

<i>Safety</i>	Charlotte	Asheville/ Winston-Salem	Raleigh/ Wilmington	TOTALS
Public Sector Inspections	33	137	91	261
# Serious Violations	27	101	59	187
# OTS Violations	63	233	124	420
# Repeat Violations	0	4	0	4
Total # Violations	90	338	183	611
Total Penalty Amt.	\$40,547	\$136,890	\$108,829	\$286,266
Average DART % +/-	-56.50%	-62.82%	-53.23%	-57.52%

<i>Health</i>	Charlotte	Asheville/ Winston-Salem	Raleigh/ Wilmington	TOTALS
Public Sector Inspections	89	61	28	178
# Serious Violations	49	36	18	103
# OTS Violations	133	100	74	307
# Repeat Violations	0	0	0	0
Total # Violations	182	136	92	410
Total Penalty Amt.	\$98,109	\$74,897	\$16,190	\$189,196
Average DART % +/-	-56.51%	-59.83%	-69.64%	-61.99%

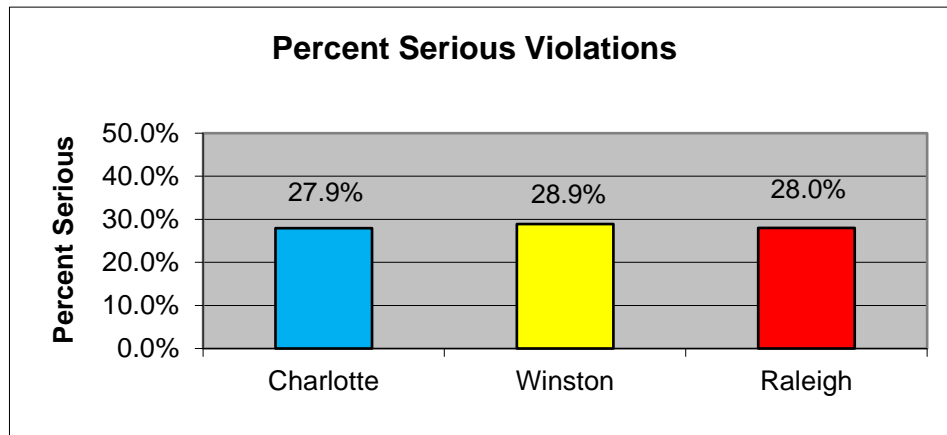
TOTALS

Public Sector Inspections	439
# Serious Violations	290
Total # Violations	1,021
Total Penalty Amt.	\$475,462
Average DART % +/-	-59.76%

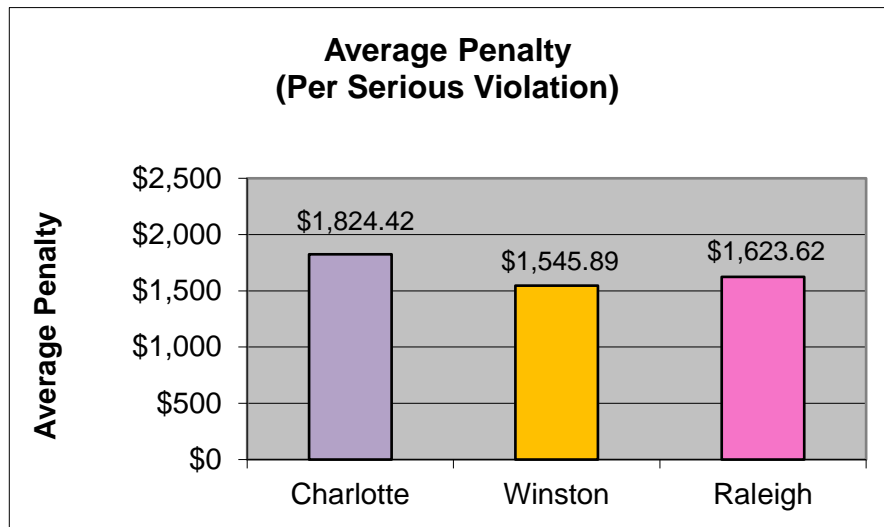


**Public Sector Targeting Program
(Programmed Planning Inspections Only)
Statistical Comparison
FY 2014 - FY 2018**

<u>Charlotte</u>		<u>Asheville/ Winston-Salem</u>		<u>Raleigh/ Wilmington</u>	
# Serious Violations	76	# Serious Violations	137	# Serious Violations	77
Total # Violations	272	Total # Violations	474	Total # Violations	275
Percent Serious:	27.9%	Percent Serious:	28.9%	Percent Serious:	28.0%



<u>Charlotte</u>		<u>Asheville/ Winston-Salem</u>		<u>Raleigh/ Wilmington</u>	
# Serious Violations	76	# Serious Violations	137	# Serious Violations	77
Total Penalty Amts.	\$138,656	Total Penalty Amts.	\$211,787	Total Penalty Amts.	\$125,019
Average Penalty:	\$1,824.42	Average Penalty:	\$1,545.89	Average Penalty:	\$1,623.62



**Public Sector Targeting Program
(Programmed Planned Inspections Only)
Statistical Comparison
FY 2014 - FY 2018**

Charlotte

**Asheville/
Winston-Salem**

**Raleigh/
Wilmington**

Total # Violations 272
Total # Inspections
WITH Violations 80

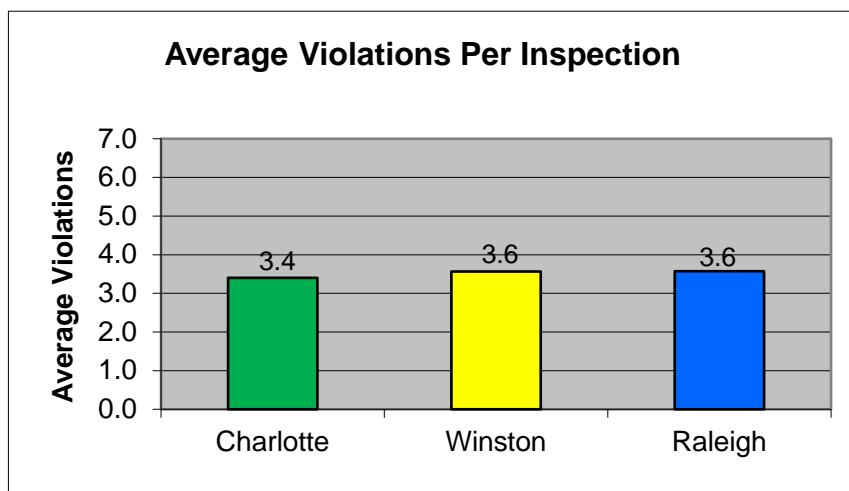
Total # Violations 474
Total # Inspections
WITH Violations 133

Total # Violations 275
Total # Inspections
WITH Violations 77

**Average Violations
Per Inspection: 3.4**

**Average Violations
Per Inspection: 3.6**

**Average Violations
Per Inspection: 3.6**



Charlotte

**Asheville/
Winston-Salem**

**Raleigh/
Wilmington**

Total # Inspections WITH Violations 80
Total # Inspections 122

Total # Inspections WITH Violations 133
Total # Inspections 198

Total # Inspections WITH Violations 77
Total # Inspections 119

**Percent Inspections
In-Compliance: 34.4%**

**Percent Inspections
In-Compliance: 32.8%**

**Percent Inspections
In-Compliance: 35.3%**

